

# REDCAP

## DATA DICTIONARY CLASS (201)



# ITHS' FOCUS

- Speeding science to clinical practice for the benefit of patients and communities.
- Promotes translation of scientific discovery by:
  - ☐ Fostering innovative research
  - ☐ Cultivating multi-disciplinary partnerships
  - ☐ Training the next generation of researchers
- More information: [www.iths.org](http://www.iths.org)



Laboratory

Clinic

Community

# Learning Objectives

**Learn how to leverage the data dictionary**

---

**Data dictionary basics**

---

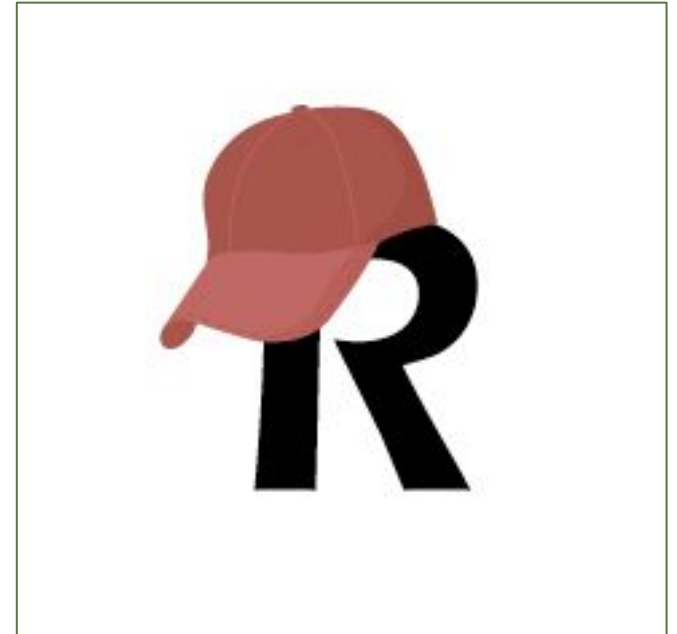
**Column descriptions**

---

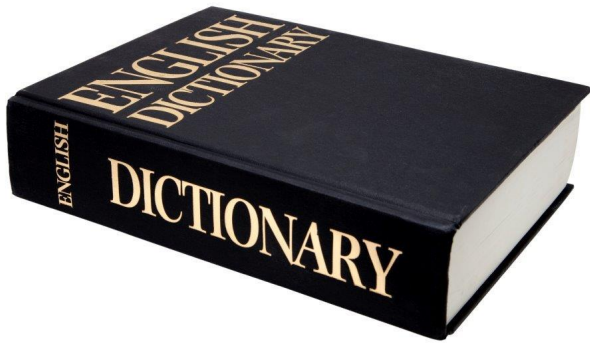
**General Excel Wizardry**

---

**Best practices**



# What's the data dictionary?



**Higher learning threshold,  
larger risk for errors, but  
quicker form development.**

► CSV spreadsheet that defines all:

- ☐ Forms
- ☐ Variables

► Does NOT define:

- ☐ Events
- ☐ Surveys, survey queues & settings
- ☐ Project settings
- ☐ User rights & data access groups
- ☐ Schedules
- ☐ Randomization
- ☐ Data quality rules
- ☐ Reports

# Data dictionary workflow

## Download the current data dictionary and backup

*Data dictionaries can be downloaded in the data dictionary upload page located on the project setup page. Store a local backup of the data dictionary or use the snapshot feature.*

---

## Modify the data dictionary

*Add or edit fields/forms/logic as needed.  
Only use one mode of design at a time to prevent overwrites.*

---

## Upload your new data dictionary

*REDCap will provide you with an overview of any errors it detected in your data dictionary. Correct those and re-upload.*

---

## Commit your data dictionary

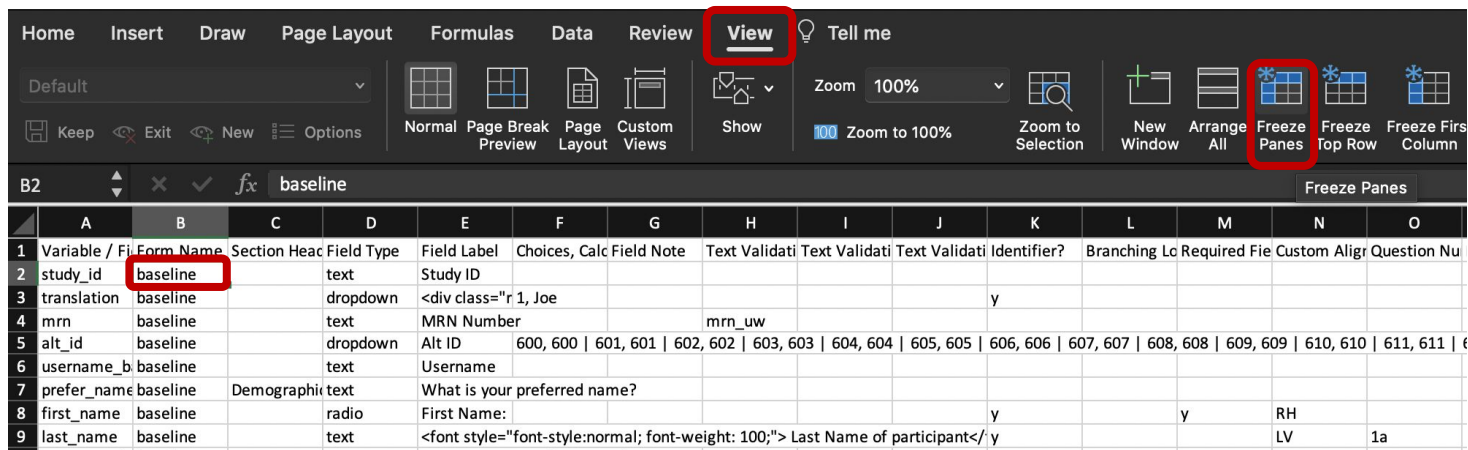
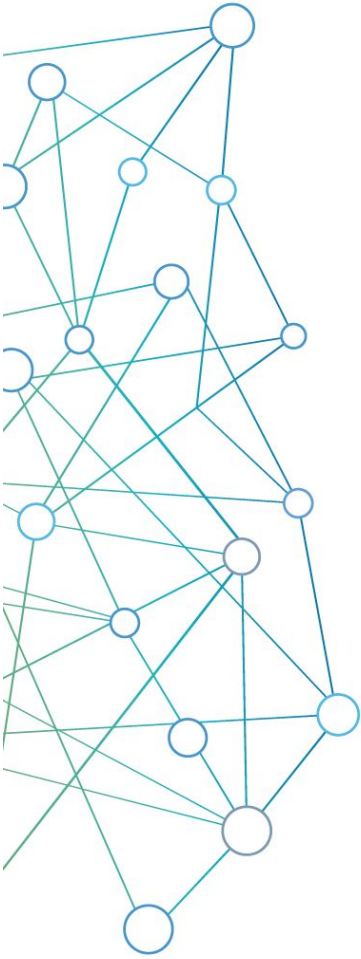
*When no critical errors are detected, you can commit your data dictionary to your project.*

# General Excel Wizardry

## Freeze Panes

*Allows you to keep the header row and variable names visible*

1. Navigate to the View tab
2. Select cell B2
3. Click "freeze panes"



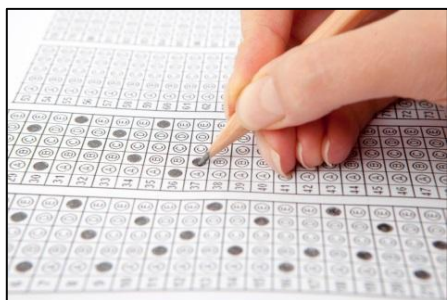
	A	B	C	D	E	F	G	H	I	J	K	L	M	N	O
1	Variable / Field Name	Section Header	Field Type	Field Label	Choices, Calc	Field Note	Text Validation	Text Validation	Text Validation	Identifier?	Branching Logic	Required	Field Custom	Alignment	Question Number
2	study_id	baseline	text	Study ID											
3	translation	baseline	dropdown	<div class="r 1, Joe						y					
4	mrn	baseline	text	MRN Number			mrn_uw								
5	alt_id	baseline	dropdown	Alt ID	600, 600   601, 601   602, 602   603, 603   604, 604   605, 605   606, 606   607, 607   608, 608   609, 609   610, 610   611, 611   612, 612										
6	username_b	baseline	text	Username											
7	prefer_name	baseline	Demographic	text	What is your preferred name?										
8	first_name	baseline	radio	First Name:						y		y		RH	
9	last_name	baseline	text	<font style="font-style:normal; font-weight: 100;"> Last Name of participant</font>										LV	1a

# Data dictionary basic overview



- ▶ Columns list aspects of variables
- ▶ Each row defines 1 variable:
  - ❑ Exception:  
First row defines the aspect headers
  - ❑ Do not mess with row 1
- ▶ Row 2 defines the REDCap record ID:
  - ❑ Mandatory row, but modifiable

## General



- ▶ Four types of aspects:
  - ❑ Mandatory (A, B, D)
  - ❑ Conditionally Mandatory (F)
  - ❑ Non-mandatory  
(E, C, G, H, I, J, K, L, M, N, O, R)
  - ❑ Matrix fields (P, Q)

## Aspects

# Aspects - Variable name

## Column A

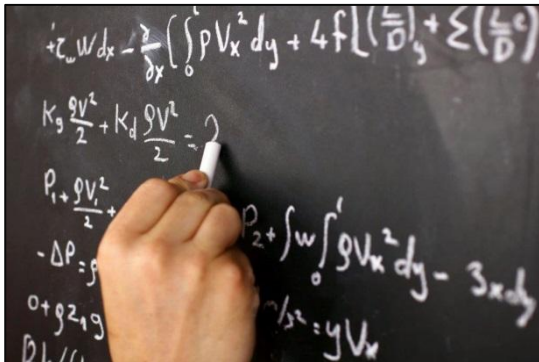
### Mandatory

#### Variable name

### Conditionally mandatory

### Non-mandatory

### Matrix fields



## Defines:

- ▶ The unique variable name of the variable. Used to store and reference that variable throughout the project

## Do's:

- ▶ Only use lower case, numbers, underscores
- ▶ Has to have at least 2 characters
- ▶ Has to be unique within the project
- ▶ Keep the variable name as short as possible

## Don'ts:

- ▶ Start with a number
- ▶ Make the name longer than 26 characters
- ▶ Use special characters (#,\$,%,!,? etcetera)



# Aspects - Form name

## Column B

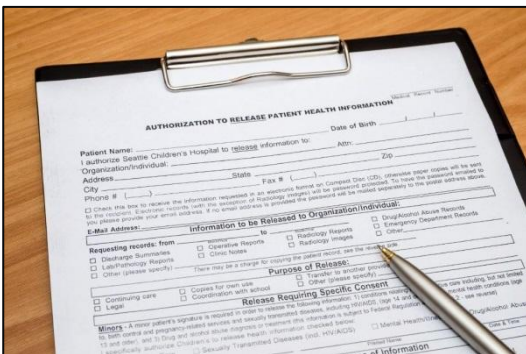
### Mandatory

#### Form name

### Conditionally mandatory

### Non-mandatory

### Matrix fields



## Defines:

- ▶ The name of the form that variable lives in.

## Do's:

- ▶ Use lower case, numbers, underscores.
  - ☐ Can be changed later to include capitalizations or special characters.
- ▶ Needs to have at least 2 characters.
- ▶ All variables in one form are grouped together in sequence.

## Don'ts:

- ▶ Use special characters (#,\$,%,!,? etcetera)

# Aspects - Section Header

## Column C

Mandatory

---

Conditionally mandatory

---

**Non-mandatory**

---

**Section Header**

---

Matrix fields



## Defines:

- ▶ This column creates a bar with the provided text in it. It can be used to define page breaks in surveys. Section headers are linked to other variables.

## Do's:

- ▶ Use any type of text you want.
- ▶ Feel free to use HTML to format the text to your liking.
- ▶ Assign it to the row of which you want the section header to appear above of.

## Don'ts:

- ▶ Create a unique row for the section header.
- ▶ Be careful when combining with fields that contain branching logic.
- ▶ Test special characters (#,\$,%,!,?, etcetera) to make sure they translate well to your online form.

# Aspects - Field Type

## Column D

Mandatory

Conditionally mandatory

Non-mandatory

Field Type

Matrix fields



## Defines:

- Defines what kind of variable this variable will be. You can only use REDCap-supported field types.

## Do's:

- Only use the allowed shorthand codes (*text, notes, dropdown, radio, checkbox, file, calc, descriptive, slider, yesno, truefalse*).
- Lookup the field type table in the FAQ for more info.

## Don'ts:

- Don't use the sql field type. That one is reserved for REDCap administrators.
- Don't edit any existing rows with the sql field type.

# Aspects - Field label

## Column E

### Mandatory

---

#### Field Label

---

### Conditionally mandatory

---

### Non-mandatory

---

### Matrix fields



## Defines:

- ▶ The question text that will be displayed to the survey participant or data entry user.

## Do's:

- ▶ Use any type of text you want.
- ▶ Feel free to use HTML to format the text to your liking.
- ▶ Make the question understandable and to the point.

## Don'ts:

- ▶ Double barrel the question.
- ▶ Create a leading question.
- ▶ Leave it totally empty.  
*(technically allowed, but considered bad form design)*

# Aspects - Choices, Calculations, or Slider labels

Column F

Mandatory

---

Conditionally mandatory

---

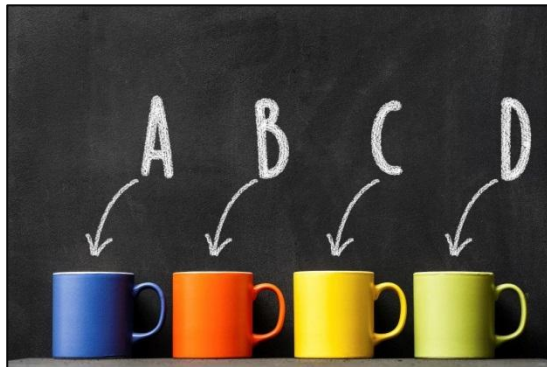
Choices, Calc's or sliders

---

Non-mandatory

---

Matrix fields



## Defines:

- Defines question choices, calculations or slider labels depending on the chosen field type.

## Do's:

- Use the following syntax for choices:
  - ▣ *raw value, label | raw value, label*
- Use the following syntax for slider labels:
  - ▣ *label | label or label | label | label*
- For calculations, use the same syntax as for branching logic. Main difference is that the calculation has to end in a number instead of a true or false statement.
- Use special functions for calculations.
- Add shortcuts for enabling a Bioportal lookup (see FAQ).

## Don'ts:

- Add a comma to a raw value.
- Make overly complex calculations.

# Aspects - Field Note

## Column G

Mandatory

---

Conditionally mandatory

---

Non-mandatory

---

Field Note

---

Matrix fields



### Defines:

- ▶ The field note will allow you to add a short instruction to variable (e.g., adding a date format to a date validated field).

### Do's:

- ▶ Use any type of text you want.
- ▶ Feel free to use HTML to format the text to your liking.
- ▶ Make the note short and to the point.

### Don'ts:

- ▶ Put a lot of text in the field note.

# Aspects - Text validation type or show slider number

Column H

Mandatory

---

Conditionally mandatory

---

Non-mandatory

---

Text validation type or slider #

---

Matrix fields



## Defines:

- ▶ The type of validation a text field might have or if you want to display the numeric value behind a slider field.

## Do's:

- ▶ Fill in the text “number” to enable the number counter behind a slider.
- ▶ Only use the allowed shorthand codes for text validation.
- ▶ Lookup the text validation shortcuts table in the FAQ for more info.

## Don'ts:

- ▶ Put in a text validation shortcut or the slider shortcut in this column for other field types. REDCap will not accept this and won't allow you to import the data dictionary.



# Aspects - Minimum and maximum for Text validation and Slider scales

## Column I & J

Mandatory

---

Conditionally mandatory

---

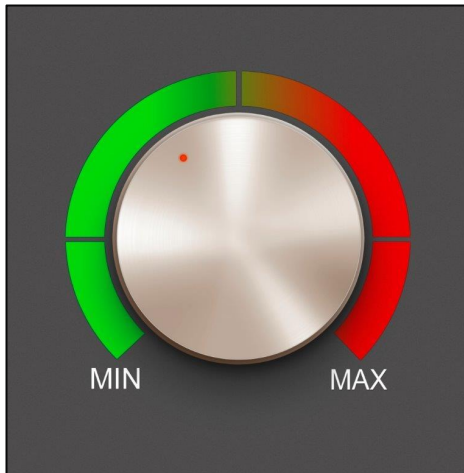
Non-mandatory

---

Min/Max

---

Matrix fields



## Defines:

- ▶ These two columns define a minimum and/or maximum value for a validated text variable or the minimum and maximum for a slider scale.

## Do's:

- ▶ Use a minimum, maximum, or both when appropriate.
- ▶ Always build in a bit of extra space to allow for outliers.
- ▶ Match the entered value to the field type (e.g., date for a date field).

## Don'ts:

- ▶ Put in a minimum or maximum in this column for other field types. REDCap will not accept this and will not allow you to import the data dictionary.



# Aspects - Identifiers

## Column K

Mandatory

---

Conditionally mandatory

---

Non-mandatory

---

ID's

---

Matrix fields



## Defines:

- Flags the variable as an identifier or not. This does not have any effect on the data entry process but does impact the data export process.

## Do's:

- Use a single “y” to flag a variable as an identifier.
- Leave the field blank to flag the variable as a non-identifier.

## Don'ts:

- Make everything an identifier.
- Put in anything other than the allowed “y” code. REDCap will not accept the data dictionary.

# Aspects - Required

## Column M

Mandatory

---

Conditionally mandatory

---

Non-mandatory

---

Required

---

Matrix fields



## Defines:

- ▶ Makes a variable required. This will be a soft requirement during the data entry process or a hard requirement when completed as a survey.

## Do's:

- ▶ Use a single "y" to flag a variable as required.
- ▶ Leave the field blank to flag the variable as optional.
- ▶ Add a field note to unstructured required fields to explain what to do when no answer can be given.

## Don'ts:

- ▶ Make a checkbox required.
- ▶ Make a variable required without "exit" options.
- ▶ Put in anything other than the allowed "y" code. REDCap will not accept the data dictionary.

# Aspects - Branching Logic

## Column L

Mandatory

---

Conditionally mandatory

---

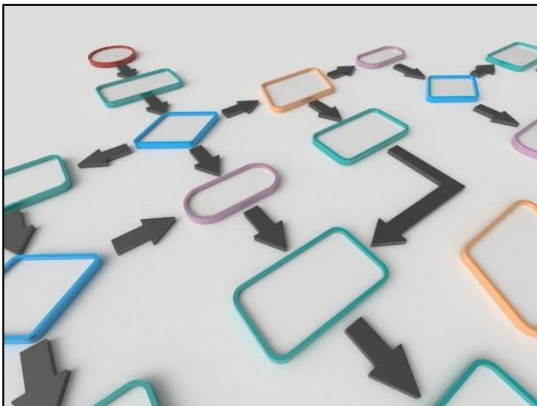
Non-mandatory

---

Branching logic

---

Matrix fields



### Defines:

- ▶ The branching logic attached to this specific variable.

### Do's:

- ▶ Make use of the copy and paste features to quickly add logic to a lot of variables.
- ▶ Use excel function to craft custom branching logic quickly.
- ▶ Test your logic to work out the bugs.

### Don'ts:

- ▶ Craft logic that never can be true.
- ▶ Use double quotes instead of single quotes.

# Aspects - Custom alignment

## Column N

Mandatory

---

Conditionally mandatory

---

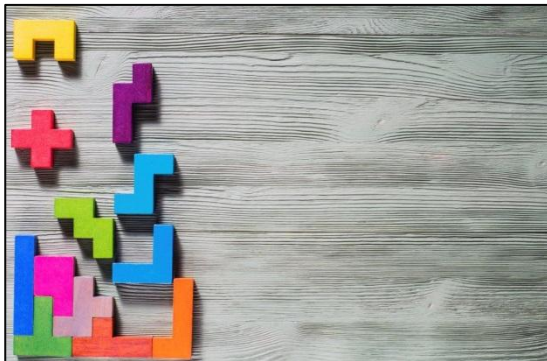
Non-mandatory

---

**Custom alignment**

---

Matrix fields



## Defines:

- ▶ Allows you to slightly modify the way REDCap displays variables.

## Do's:

- ▶ Use the shortcuts codes for the four options:
  - ☐ LV: Left Vertical
  - ☐ LH: Left Horizontal
  - ☐ RH: Right Horizontal
  - ☐ RV: Right Vertical (the default option when left blank)

## Don'ts:

- ▶ Put in anything other than the allowed shortcut codes. REDCap will not accept the data dictionary.

# Aspects - Question numbering

## Column O

Mandatory

---

Conditionally mandatory

---

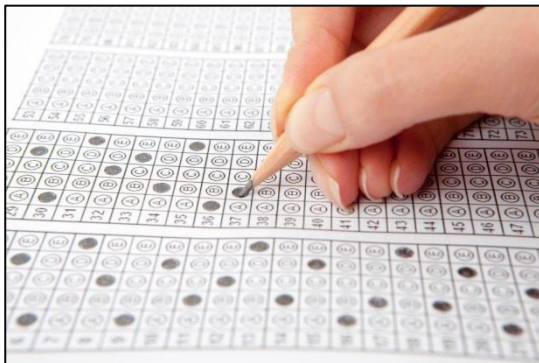
Non-mandatory

---

Question numbering

---

Matrix fields



### Defines:

- ▶ Allows you to add a custom number per variable in survey mode.

### Do's:

- ▶ Use logical ordering.
- ▶ Take branching logic into account.
  - ☐ Create sub-numbers (1a, 1b, etcetera).
- ▶ Leave blank if you don't want any numbers for questions.

### Don'ts:

- ▶ Add question number for non-surveys.

# Aspects – Matrix group

## Column P

Mandatory

---

Conditionally mandatory

---

Non-mandatory

---

Matrix fields

---

Matrix group



## Defines:

- Groups variables into a matrix.

## Do's:

- Only use lower case, numbers, underscores.
- Has to have at least 2 characters.
- Has to be unique within the project.
- Matrices have to be sequential and need to have the same options for all variables.
- Use a section header in the top variable of a matrix to create a matrix header.

## Don'ts:

- Add a matrix name for field types that are not radio buttons or checkboxes.
- Create matrices with a lot of options.

# Aspects – Matrix ranking

## Column Q

Mandatory

---

Conditionally mandatory

---

Non-mandatory

---

**Matrix fields**

---

**Matrix ranking**



## Defines:

- Flags whether or not a matrix is a ranking matrix or not.

## Do's:

- Use a single “y” to flag a variable as required.
- Leave the field blank to flag the variable as optional.
- Ranking matrices are only allowed for radio button matrices.

## Don'ts:

- Create a checkbox ranking matrix.
- Put in anything other than the allowed “y” code. REDCap will not accept the data dictionary.



# Aspects - Field annotation & Action tags

## Column R

Mandatory

---

Conditionally mandatory

---

Non-mandatory

---

Field annotation & Action tags

---

Matrix fields



## Defines:

- ▶ Ability to add a note about the field for the designer. Or enable 1 or more action tags for this field.

## Do's:

- ▶ Use any text you want for an annotation
- ▶ Use the following shorthand codes for action tags:  
*@HIDDEN, @HIDDEN-FORM, @HIDDEN-SURVEY, @HIDDEN-APP, @READONLY, @READONLY-FORM, @READONLY-SURVEY, @READONLY-APP, @LATITUDE, @LONGITUDE, @PASSWORDMASK, @NOW, @TODAY, @BARCODE, @DEFAULT*
- ▶ Use piping in combination with the default tag to prefill a variable with a previously entered value.

## Don'ts:

- ▶ Start typing the @ sign into the cell. Format the cell first as a text field. Excel will register an error if you do not.



# Finding and Fixing Issues

RETURN TO PREVIOUS PAGE

**⚠ Your data dictionary could NOT be uploaded because of the errors listed below. Please correct these errors and try uploading your data dictionary again.**

## Errors found in your Data Dictionary:

Each multiple choice field (radio, drop-down, checkbox, etc.) must have choices listed in column F, but the following cells have choices missing: **F8, F14**

There are variables used in the branching logic that are not listed as real variables in column A. All variables used in branching logic must exist in column A. Below are the variables not found in column A.

**f\_name (L14)**

B2		A	B	C	D	E	F	G
1	Variable / Field Name	Form Name	Section Head	Field Type	Field Label	Choices, Calc	Field Note	
2	study_id	baseline		text	Study ID			
3	translation	baseline		dropdown	<div class="r	1, Joe		
4	mrn	baseline		text	MRN Number			
5	alt_id	baseline		dropdown	Alt ID	600, 600   601, 601   602,		
6	username_b	baseline		text	Username			
7	prefer_name	baseline	Demographic	text	What is your preferred name?			
8	first_name	baseline		radio	First Name:			
9	last_name	baseline		text	<font style="font-style:normal; font-we			

# General Excel Wizardry

## Sorting & Filter

*Sorting on a form name or field type will allow you to modify specific things quickly without having to hunt for them.*

---

## Find and Replace

*Update variable names, logic, calculations, etc quickly.*

---

## Crafting dynamic branching logic

*When repeating the same variable over and over, you can have excel craft the logic for your with cell references.*

---

## Auto fill variable names

*Excel can automatically increment numbers when using "Fill series". Only works when the text ends in a number.*



# Best Practices

## Format Optimization and Longitudinal

### Splitting up / merging forms

- ▶ Change the form name in Column B
  - ▶ Not possible in the online designer

### Record ID / First form

- ▶ REDCap needs a record ID to store data
  - ▶ Always in the very first form as a text box
  - ▶ Needs to be assigned to the first event

### Branching Logic / Calculations

- ▶ Add event identifiers if necessary
  - ▶ e.g. [baseline\_arm\_1][dob]

# Questions?



Institute of **Translational** Health Sciences  
ACCELERATING RESEARCH. IMPROVING HEALTH.



# CONNECT WITH ITHS

**[www.iths.org](http://www.iths.org)**



**@ITHS\_UW**



**/ithsuw**



**/InstituteofTranslationalHealthSciences**



Institute of **Translational** Health Sciences  
ACCELERATING RESEARCH. IMPROVING HEALTH.

# Visit ITHS.org to Become an ITHS Member

Join a unique catalyst that accelerates discoveries to practice.

## Access

*Members gain access the different research services, resources, and tools offered by ITHS, including the ITHS Research Navigator.*

---

## Education and Training

*Members can access a variety of workforce development and mentoring programs and apply for formal training programs.*

---

## Funding

*Members can apply for local and national pilot grants and other funding opportunities. ITHS also offers letters of support for grant submissions.*

---

## Collaboration

*Members can connect with collaborators across the CTSA consortium.*