

# REDCAP ADVANCED DATABASE MANAGEMENT(303)

**ITHS**

Institute of **Translational** Health Sciences  
ACCELERATING RESEARCH. IMPROVING HEALTH.



# ITHS Focus

- Speeding science to clinical practice for the benefit of patients and communities.
- Promotes translation of scientific discovery by:
  - ❑ Fostering innovative research
  - ❑ Cultivating multi-disciplinary partnerships
  - ❑ Training the next generation of researchers
- More information: [www.iths.org](http://www.iths.org)

Laboratory

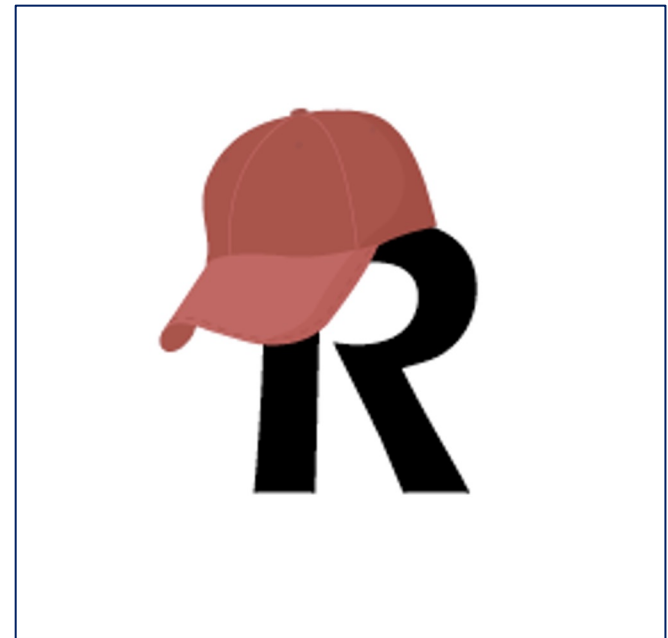
Clinic

Community



# Learning objectives

- How to manage bigger more complex projects?
  - User rights management
  - Data quality
  - Data manipulation
  - Improving overview / workflow





## User rights management

# User rights management

## Uses / Reasons why?

---

Roles

---

Suspending users

---

Data Access Groups

---



## Uses / Reasons why?

- Compliance
  - HIPAA
- Data Quality
  - Blinding groups of users
- Control your own dataset
  - Exports
  - Ownership
- Prevent "too many cooks in the kitchen"
- Relieving your training burden

# User rights management

Uses / Reasons why?

---

**Roles**

---

Suspending users

---

Data Access Groups

---



## User roles

- Allows for quick assignment of previously established rights
  - e.g., Temporary users like medical students
- Forces you to think about who does what
- Examples of common roles:
  - Data entry
  - Project manager/PI
  - User manager
  - Design manager
  - Statistician
  - Research Coordinator

# User rights management

Uses / Reasons why?

---

Roles

---

**Suspending users**

---

Data Access Groups

---



## Suspending users

Two options:

- Global suspension
  - Done by an admin
  - Great for suspending for a ton of projects at the same time
  - Usually done for people leaving an organization
- Project specific suspension
  - Predetermined date
  - Good for temporary users
  - Done by user rights enabled user

# User rights management

Uses / Reasons why?

---

Roles

---

Suspending users

---

**Data Access Groups**

---



## Data Access Groups (DAG)

Separate records by group:

- Users in a DAG can only see records assigned to their group
- Records created by a user in a DAG automatically get assigned to that DAG
- Records can be re-assigned
  - Via the record home page
  - Via data import
- Users not in any DAG can see all records.
- DAG's are independent of user rights
  - Set both for new users



Q U A L I T Y

## Data Quality



**Garbage In, Garbage Out!!**

# Data Quality

## Pre-Capture

---

Design

---

Double Data Entry

---

During Capture

---

Post Capture

---



## Before the start of data collection

- Design
  - Pre-emptive strike
  - More options than paper forms
  - Talk to your statistician
- Validation
  - Collect the "right" kind of data
- Required fields
  - Prevents missing data
- Structured fields vs unstructured fields
- Double data entry

# Data Quality

## Pre-Capture

---

### Design

---

Double Data Entry

---

## During Capture

---

## Post Capture

---



## Design - Validation

- Think about data analysis
  - e.g., "Two" vs "2"
- Validation options
  - Date/time
  - Numeric
  - Special (MRN's, email, phone, zip code)
- Minimum & Maximum
  - Optional
  - Think about outliers
- Action tags
  - @CHARLIMIT, @WORDLIMIT

# Data Quality

## Pre-Capture

---

### Design

---

Double Data Entry

---

## During Capture

---

## Post Capture

---



## Design – Required fields

- Soft requirement
  - Only for users
  - Good reminder
- Hard requirement
  - Survey mode
  - Unskippable
- Best practices
  - Checkboxes
  - Give people an "out"
    - e.g., Prefer not to answer, Unknown

# Data Quality

## Pre-Capture

---

### Design

---

Double Data Entry

---

## During Capture

---

## Post Capture

---



## Design – Structured vs Unstructured

- Structured fields
  - e.g., Dropdowns, radio buttons, checkboxes, lookup tables, calculated fields
  - Quantifiable
  - Finite predictable answers
  - Easy analysis
- Unstructured fields
  - e.g., Text boxes, note boxes
  - More flexibility
  - Higher risk for "unforeseen" answers
  - Might require some cleaning later

# Data Quality

## Pre-Capture

---

Design

---

## Double Data Entry

---

During Capture

---

Post Capture

---



## Double Data Entry

- Main purpose is to prevent:
  - Transcription bias
    - From paper to electronic
  - Interpretation bias
    - Interpreting clinical notes, paper comments
- Useless when doing:
  - Direct data entry
  - Surveys
  - Extractions from other clinical systems
- Requires twice the effort, time and resources

# Data Quality

Pre-Capture

---

**During Capture**

---

Data Resolution Workflow

---

During Capture

---

Post Capture

---



## During data capture

- Deal with the unexpected
  - Easier to do "during" than "after the fact"
- Course correct midstream
  - Change process in REDCap
  - Move to production
- Track issues
  - Field comment log (default)
  - Data Resolution Workflow
- Dealing with issues
  - Data validator role
  - Make 1 person responsible



# Data Quality

Pre-Capture

---

**During Capture**

---

**Data Resolution Workflow**

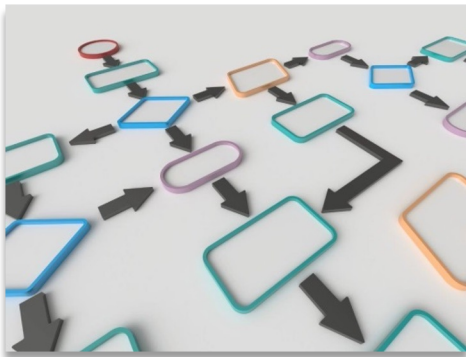
---

During Capture

---

Post Capture

---



## Data Resolution Workflow

- Field Comment Log
  - Basic default option
  - Comment on any variable in any record
- Data Resolution Workflow
  - Turn on in the project setup page
  - Setup the appropriate user rights
  - Allows for the opening of Queries/Issues
  - Manage the issues over time
  - Asynchronous
  - HIPAA compliant (opposed to email)
  - Ideal for larger dispersed teams

# Data Quality

Pre-Capture

---

During Capture

---

**Post Capture**

---

Logging

---

Data Quality

---



## Post data capture

- Adhere to compliance rules
  - Logging
  - Data Resolution Workflows
- Clean your datasets
  - Eases analysis
  - Good indicator of your data quality
- Do a post-mortem
  - For future studies

# Data Quality

Pre-Capture

---

During Capture

---

**Post Capture**

---

**Logging**

---

Data Quality

---



## Post data capture - Logging

- REDCap tracks everything
  - Page views
  - Design edits
  - Data entry
  - Modifications
- Exportable in a CSV
- Filterable
  - Tons of data
- Accessible through "Logging" application
- Talk to the REDCap Administrator for more technical logging like IP addresses

# Data Quality

Pre-Capture

---

During Capture

---

**Post Capture**

---

Logging

---

**Data Quality**

---



## Post data capture – Data Quality

- Run checks on the entire dataset
- 8 predefined rules
  - Execute to check a rule
  - Rule H lets you update calculations in bulk
- Allows for custom rules
  - Based on branching logic
  - Look for "impossible" scenarios
    - "Negative number of births"
    - Birth date after visit dates



## Data manipulation

# Data manipulation

## Data Manager

---

Deleting records

---

Wiping forms/surveys

---

Locking

---

Data Pre-population

---



## Data Manager

- Responsible for:
  - Design
  - Data Quality
  - Data loading
  - Other data responsibilities
- Needs to know:
  - The dataset itself
  - REDCap capabilities
  - Data manipulation
    - Importing & Exporting class recommended
- Manage this role through the user rights

# Data manipulation

Data Manager

---

**Deleting records**

---

Wiping forms/surveys

---

Locking

---

Data Pre-population

---



## Deleting records

- Governed by a specific user rights
  - Is turned off by default
- Delete individual record
  - Done in the record home page
  - Removes entire record
- Delete in bulk
  - "Erase all data" in "Other functionality" tab
  - API
- Irreversible unless you have a backup

# Data manipulation

Data Manager

---

Deleting records

---

**Wiping forms/surveys**

---

Locking

---

Data Pre-population

---



## Wiping forms and surveys

- Also governed by the "delete records" user rights
- Does not delete the entire record
- Individual forms
  - Done on the form itself
  - Button at the bottom of the form
  - Enter "Edit survey" mode at the top of the form before you delete a survey
    - Requires "edit survey" rights
- Events
  - Done in the record home page
  - Click the little red "X" underneath an event



# Data manipulation

Data Manager

---

Deleting records

---

Wiping forms/surveys

---

**Locking**

---

Data Pre-population

---



## Locking

- Governed by the "Lock/Unlock records" user right
- Individual forms
  - Done on the form itself
  - Checkbox at the bottom of the form
  - Enter "Edit survey" mode at the top of the form before you lock a survey
    - Requires "edit survey" rights
- Entire record
  - Done in the record home page
  - Select option in the "Choose Action" dropdown
- Locking can be undone by users with locking rights

# Data manipulation

Data Manager

---

Deleting records

---

Wiping forms/surveys

---

Locking

---

**Data pre-population**

---



## Data pre-population

Three main methods:

- @DEFAULT tag
  - Hard coded value
  - Piped in value from elsewhere in the record
  - Variable must not be hidden with logic
- @PLACEHOLDER tag
  - Shows a suggestion
  - Does not save when untouched
- Importing
  - Preload most kinds of data
  - Great for demographics or EMR data dumps



## Improving overview / workflow

# Improving overview / workflow

## Custom labels

---

Custom dashboards

---

Creative report uses

---

"To do" lists

---

"Dynamic" reports

---



## Custom labels

- Pipe in entered values
- Use piping syntax
- Record label
  - e.g., Last name, first name (*Doe, John*)
  - Setup in "Additional customizations"
- Event label
  - e.g., Visit date (*06-06-2018*)
  - Setup in "Define my events"
- Repeated instrument label
  - e.g., Medication name (*Tramadol*)
  - Setup in "Repeated instruments and events"

# Improving overview / workflow

Custom labels

---

**Custom dashboards**

---

Creative report uses

---

"To do" lists

---

"Dynamic" reports

---



## Custom dashboards

- Need "project design/setup" rights to setup
- Found in the "Record Status Dashboard"
- Viewable by every user
  - But limited by individual user rights
- Filter based on:
  - Branching logic
  - Completion status
  - Events
  - Forms
- Assorted display options available

# Improving overview / workflow

Custom labels

---

Custom dashboards

---

**Creative report uses**

---

"To do" lists

---

"Dynamic" reports

---



## Creative report uses

- You can build as many reports as you want
- Take advantage of the fact that REDCap runs the report every time you access it
- Useful options
  - Filter logic
  - Live filters
  - Sorting
  - Event limits
- Main purpose is to export data
- Other uses:
  - To do lists
  - Data quality

# Improving overview / workflow

Custom labels

---

Custom dashboards

---

**Creative report uses**

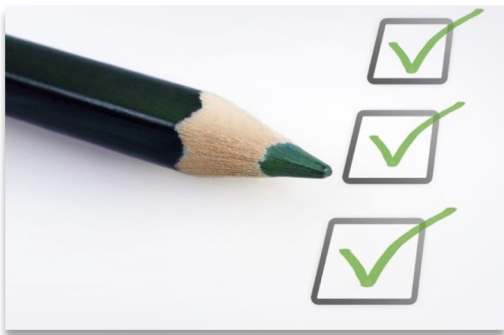
---

**"To do" lists**

---

"Dynamic" reports

---



## "To do" lists

- Create a status variable
  - e.g., Processing status
- Build logic to show all records where that status variable is empty or has a specific value
  - Run the report
  - Select a record
  - Process the record
  - Update status variable
  - Rinse and repeat until empty

# Improving overview / workflow

Custom labels

---

Custom dashboards

---

**Creative report uses**

---

"To do" lists

---

**"Dynamic" reports**

---



## "Dynamic" reports

- Create a date variable
  - e.g., Time stamp
- Have the date variable automatically filled in
- Build logic that compares that date variable (or smart variable) against today's date
- Specify a range
  - e.g., Last week would be 0 and -7 \*
- Run the report
- The report will change based on:
  - Data entry (new records)
  - Time (older records drop off)



Thank You!

Questions?



# CONNECT WITH ITHS

[www.iths.org](http://www.iths.org)



[@ITHS\\_UW](https://twitter.com/ITHS_UW)



[/ithsuw](https://www.youtube.com/ithsuw)



[/InstituteofTranslationalHealthSciences](https://www.facebook.com/InstituteofTranslationalHealthSciences)

# Visit [ITHS.org](https://ITHS.org) to Become an ITHS Member

Join a unique catalyst that accelerates discoveries to practice.

## Access

*Members gain access the different research services, resources, and tools offered by ITHS, including the ITHS Research Navigator.*

---

## Education and Training

*Members can access a variety of workforce development and mentoring programs and apply for formal training programs.*

---

## Funding

*Members can apply for local and national pilot grants and other funding opportunities. ITHS also offers letters of support for grant submissions.*

---

## Collaboration

*Members can connect with collaborators across the CTSA consortium.*