

Career Development Series 2022

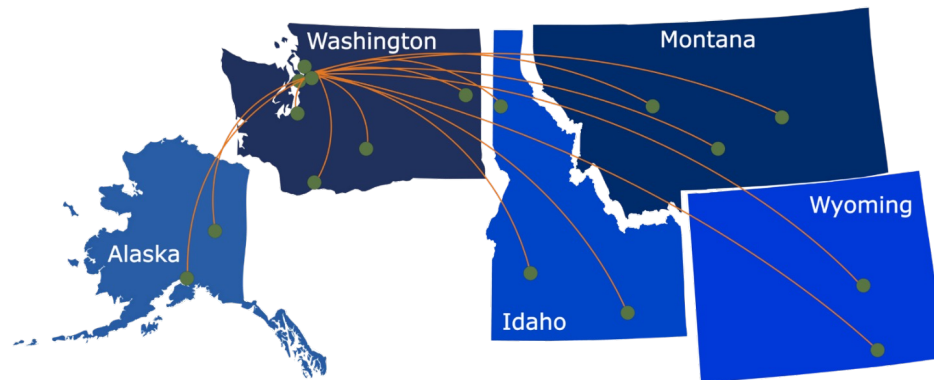
HOW TO EXPAND YOUR PROFESSIONAL CONNECTIONS OUTSIDE OF YOUR INSTITUTION

Presentation will begin at 12:00 PM (PT)



ITHS

Institute of Translational Health Sciences
ACCELERATING RESEARCH. IMPROVING HEALTH.



What We Offer:

- 1 Research Support Services:** Members gain access to the different research services, resources, and tools offered by ITHS, including the ITHS Research Navigator.
- 2 Community Engagement:** Members can connect with regional and community based practice networks
- 3 Education & Training:** Members can access a variety of workforce development and mentoring programs and apply for formal training programs.
- 4 Funding:** Members can apply for local and national pilot grants and other funding opportunities. ITHS also offers letters of support for grant submissions.

Contact ITHS

Director of Research Development



- Project Consultation
- Strategic Direction
- Resources and Networking

Melissa D. Vaught, Ph.D.
ithsnav@uw.edu
206.616.3875

Scientific Success Committee

- Clinical Trials Consulting
- Guidance on Study Design, Approach and Implementation
- Feedback on Design and Feasibility

[https://www.iths.org/investigators/
services/clinical-trials-consulting/](https://www.iths.org/investigators/services/clinical-trials-consulting/)

Feedback

At the end of the seminar, a link to the feedback survey will be sent to the email address you used to register.

Career Development Series 2022

How to Expand Your Professional Connections Outside of Your Institution

Presented by:
Nancy E. Davidson, MD
Fred Hutchinson Cancer Center and University of
Washington



ITHS

Institute of **Translational** Health Sciences

ACCELERATING RESEARCH. IMPROVING HEALTH.

Learning Objectives

At the end of the session, participants will be able to:

- 1** Identify personal goals for how establishing outside relationship will enhance my career growth and impact
- 2** Understand possible ways to foster outside professional relationship through colleagues, professional organization, professional activities, and other mechanisms

Overview

In our ever more connected world, a successful, productive, and satisfying career in biomedical research and care can be accelerated and enhanced by building professional relationships outside of one's institution. In this session we will discuss how to establish and foster these relationships over the course of one's career.

WHO ARE YOU?

Some quick questions to learn
about who we are

ABOUT ME



Executive Vice President for Clinical Affairs and Division Chief at Fred Hutch and University of Washington and Professor of Medicine

Director, University of Pittsburgh Cancer Institute and Professor at University of Pittsburgh

Assistant Professor to Professor of Oncology, Johns Hopkins

Medical oncology fellowship, National Cancer Institute

Internal medicine residency, University of Pennsylvania and Johns Hopkins
MD Harvard Medical School

SOME OF MY EXTERNAL ACTIVITIES



- President of my professional societies—American Society of Clinical Oncology and American Association for Cancer Research
- Participant, reviewer and leader for multiple NIH/National Cancer Institute activities
- Scientific reviewer for cancer philanthropies
- Reviewer and editorial board member for many journals
- Volunteer board member for multiple organizations—scientific and lay

WHY DO YOU WANT TO BUILD EXTERNAL CONNECTIONS?

Your primary goal—Engage in meaningful contributions in :

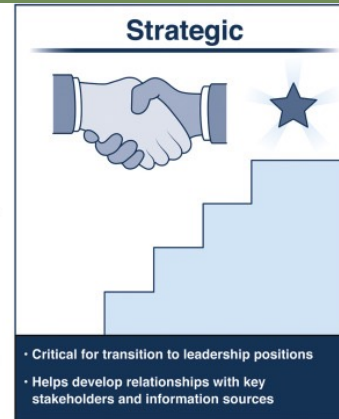
- Direct research and/or
- Patient care and/or
- Education and/or
- Administration



So why expand?

- Enhance our collective impact—science and medicine are team sports
- Advance your own career
- Broaden your horizon

A FRAMEWORK



Gaidos et al,
Gastroenterology, 2021

PEOPLE

Your mentors—for life

Thanks to my Mentors...



Gerald Wogan



Marc Lippman



Kent Osborne



Martin Abeloff



Stephen Baylin

Thanks to my Mentors...



Arthur S. Levine, MD



Jeffrey Romoff, M.Phil



Shelton Earp, MD



John Glick, MD



Allen Lichter, MD



Richard Schilsky, MD



Gabriel Hortobagyi, MD



William Wood, MD

Scientific

Career



Institute of Translational Health Sciences
ACCELERATING RESEARCH. IMPROVING HEALTH.

PEOPLE

Your mentors—for life

- Identify different mentors for different activities and career stages
- Keep your mentors
- Recognize the value of bidirectional mentorship

Scientific

Career

PEOPLE

Your peers and trainees —for life



PEOPLE

Patients



PEOPLE

Friends—use your social network

Neighbors

Schools—yours and your kids

Church/synagogue/mosque/other

Civic or community organizations

Volunteer work

Hobbies

PEOPLE—QUESTIONS OR SUGGESTIONS?



Photo: Getty Images/Illustration: Sarah Garcea

PROFESSIONAL ORGANIZATIONS

My Road to ASCO President

Regular attendee of annual meeting
Presenter—poster, talk, discussant

Elected to Board of Directors



Joined ASCO
Received Young Investigator Grant

Joined and chaired committees

Elected President

“One Community”
Initiated Cost of
Care Task Force



PROFESSIONAL ORGANIZATIONS

- Choose your organization(s)
- Join—may have a trainee track and activities
- Can your mentor help?
- Submit your work
- Attend the meeting
- Volunteer for activities of interest to you
- Deliver on what you commit to
- Sustained engagement



PROFESSIONAL PLATFORMS — MEETINGS

- Choose meetings wisely—small vs large
- Ideal if you have something to present
- Plan your agenda/itinerary to maximize value to you
- Poster sessions are great networking opportunities
- Take advantage of any career enhancement opportunities for trainees/early investigators embedded in the meeting
- Apply for travel awards, etc.



PROFESSIONAL PLATFORMS—GRANT REVIEWS



grants.nih.gov

- Take the opportunity to serve if approached—especially if it is a funder of interest to you
- Review with the rigor you want for your grant applications

PROFESSIONAL PLATFORMS — MANUSCRIPT REVIEWS

- Agree to help if mentor asks for help with a review—but ask if you can be recognized as a co-reviewer
 - Ask members of your team to recommend you as an alternate reviewer
 - Scrutinize invitations to review—a reputable journal
 - Review the manuscript as you would want your manuscript to be reviewed
-
-

PROFESSIONAL PLATFORMS — OPPORTUNITIES TO SPEAK

- Consider the venue—professional vs lay, internal vs external-- and tailor accordingly
 - Ask for directions and follow them
 - Practice!
 - Hone your skills in answering questions
-
-

PROFESSIONAL PLATFORMS—SOCIAL MEDIA



Rapidly evolving
Learn from others
Be careful!



PROFESSIONAL PLATFORMS—SOCIAL MEDIA

CAREER COLUMN

17 July 2020

Four ways to build your network without attending a conference

AuthorAID, LinkedIn and WeChat can help to plug the connections gap when events get cancelled, says Edmond Sanganyado.

nature

PROFESSIONAL PLATFORMS — QUESTIONS OR SUGGESTIONS?

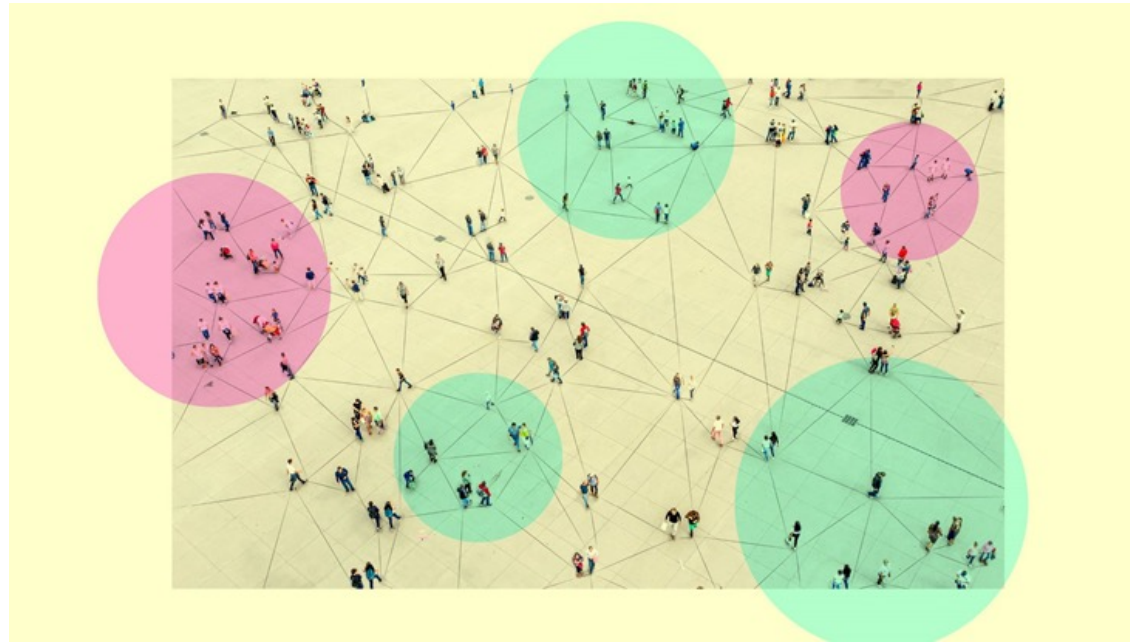


Photo: Getty Images/Illustration: Sarah Garcea

SOME GENERAL TENETS

Remember your day job---
it is your top priority!

SOME GENERAL TENETS

Sharpen your
communication skills—
writing, speaking, listening

SOME GENERAL TENETS

Be a generous
collaborator/colleague

SOME GENERAL TENETS

Overcome “imposter syndrome” –say “yes” even if it is a bit outside your comfort zone

SOME GENERAL TENETS

Best to under promise and
over deliver

SOME GENERAL TENETS

If you say yes, then deliver on your commitment—on time and according to the directions

SUMMARY

People

Professional organizations

Professional platforms

SOME READING

<https://hbr.org/2005/12/how-to-build-your-network>

Give and take: why helping others drives our success, A. Grant, 2013

Thank You!

Open for Questions

ITHS

Institute of **Translational** Health Sciences

ACCELERATING RESEARCH. IMPROVING HEALTH.

Feedback Survey

A link to the feedback survey has been sent to the email address you used to register.

Please get out your device, find that email, and spend a few moments completing that survey before you leave today.

Tip: If on a mobile device, shift view to landscape view (sideways) for better user experience.