

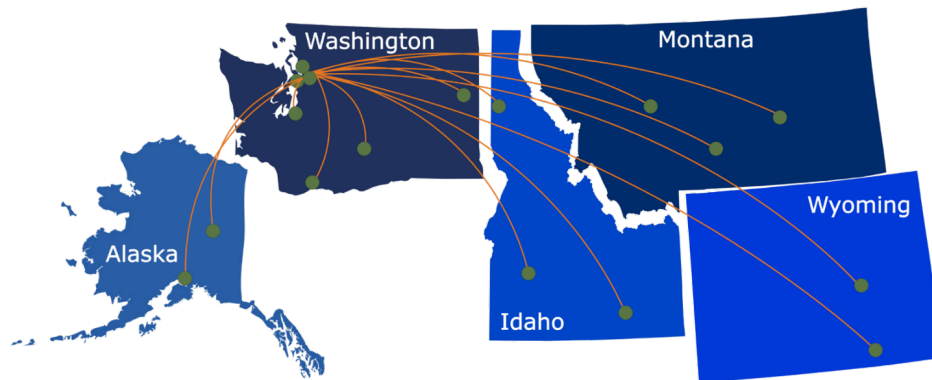
Clinical Research Education Series 2021

Presentation will begin at 12:00 PM (PT)

Speaking Truth to Power: How to Spot Risk and Guide Your Study PI/Sponsor to Good Patient Outcomes

ITHS |

ITHS | Institute of Translational Health Sciences
ACCELERATING RESEARCH. IMPROVING HEALTH.



ITHS

Institute of **Translational Health Sciences**
ACCELERATING RESEARCH. IMPROVING HEALTH.

Contact our **Director of Research Development**



- **Project Consultation**
- **Strategic Direction**
- **Resources and Networking**

Melissa D. Vaught, Ph.D.
ithsnav@uw.edu
206.616.3875

Feedback

At the end of the seminar, a link to the feedback survey will be sent to the email address you used to register.

Clinical Research Education Series 2021

Speaking Truth to Power: How to Spot Risk and Guide Your Study PI/Sponsor to Good Patient Outcomes

Presented by: Teddy Johnson

Director of Technology Development for ITHS



Learning Objectives

- 1 Identify risks associated with a new therapy or product
- 2 Consider the multiple perspectives involved in clinical decision-making
- 3 Identify opportunities to make your voice heard



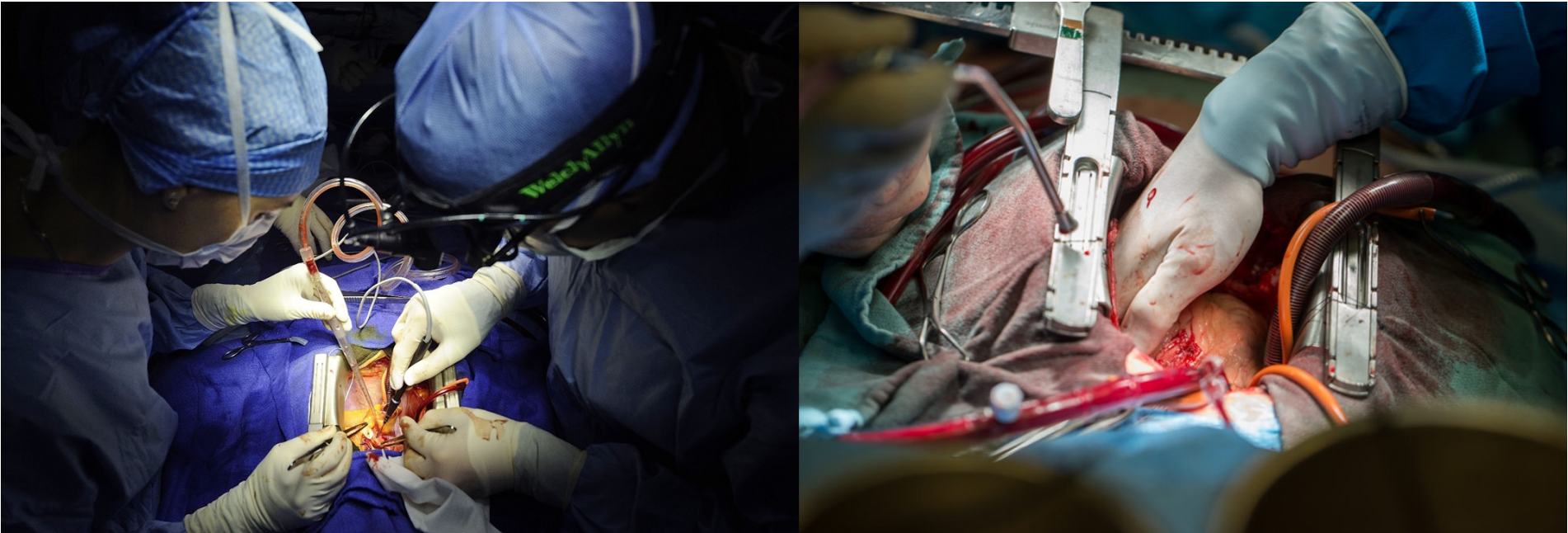
Getting to Know Each Other



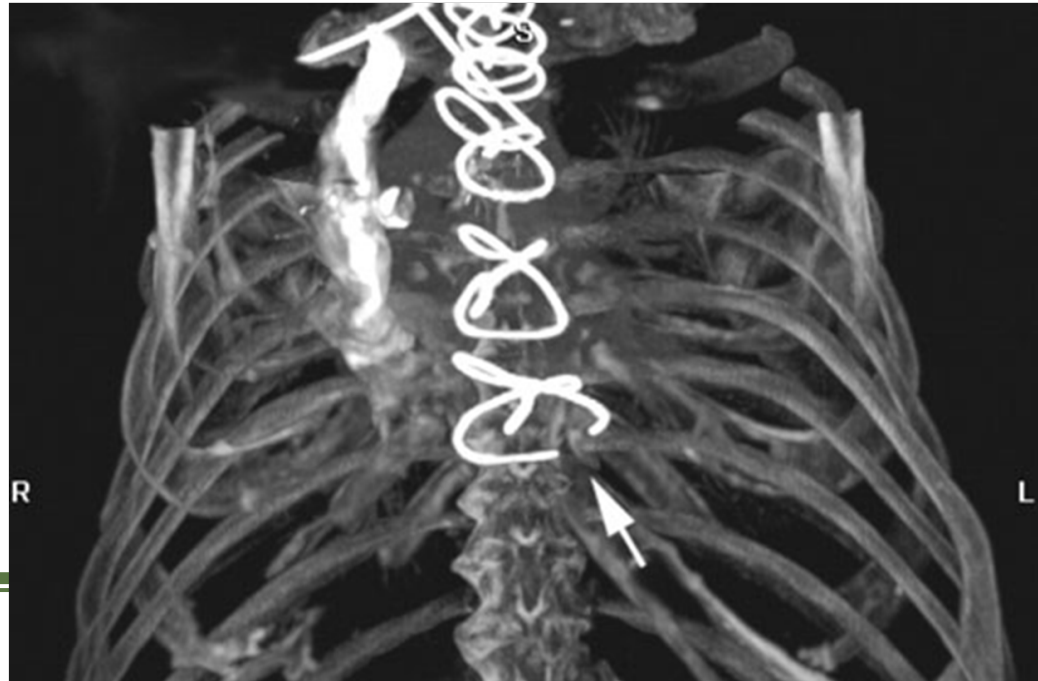
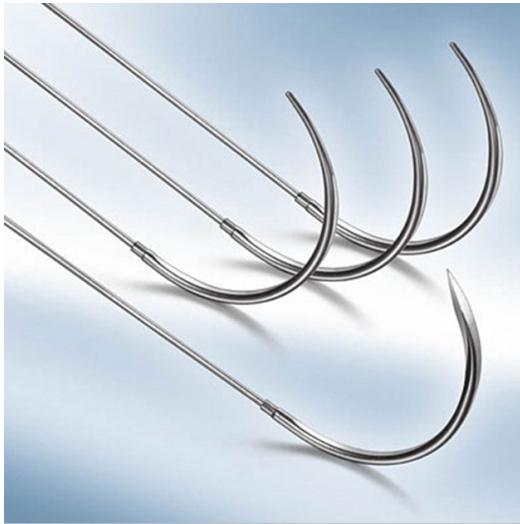
Stanford | ENGINEERING
Mechanical Engineering



Little Old Lady Getting Bypass Surgery

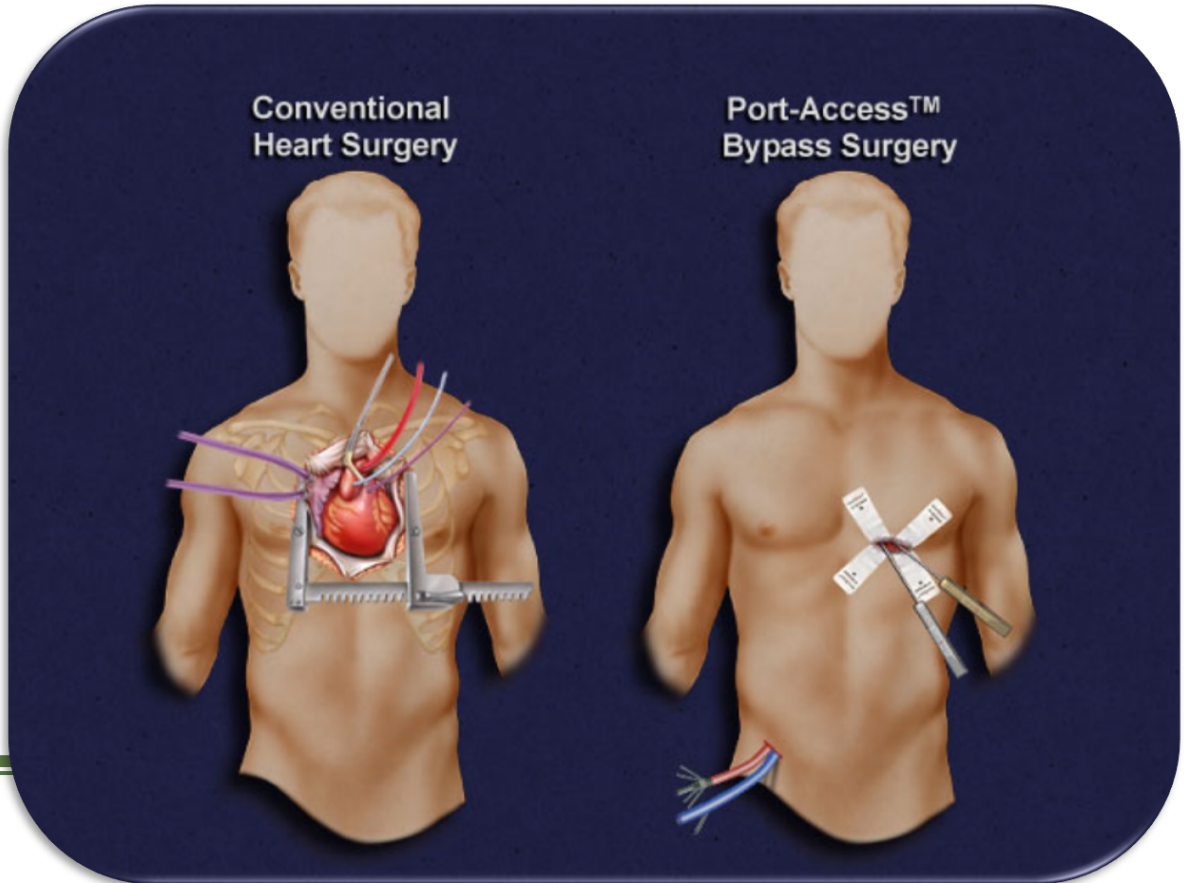
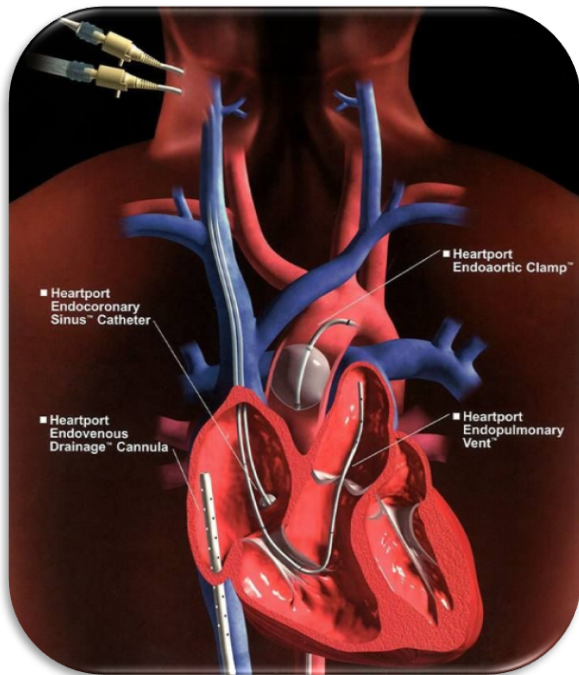


Inspiration



Innovation

HEARTPORT®



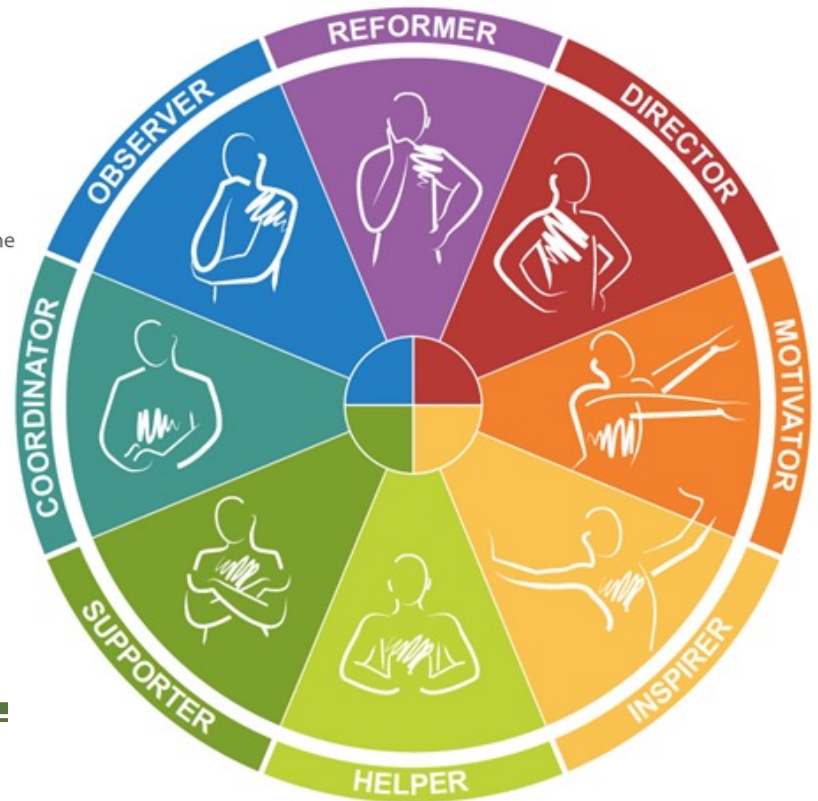


What about You?

Poll: How would you categorize yourself?

The order and strength of the four colour energies in each participant generates eight types:

- Director** | Extraverted Thinking | Results focus, decisive, assertive
- Motivator** | Extraverted Intuition | Drive, enthusiasm, positive thinking
- Inspirer** | Extraverted Feeling | Persuasive, creative, people skills
- Helper** | Introverted Intuition with Extraverted Sensing | Flexible and helps others, shared ideas
- Supporter** | Introverted Feeling | Listens, loyal, team approach
- Coordinator** | Introverted Sensing | Planning, organising, time management
- Observer** | Introverted Thinking | Sets standards, Product knowledge, analysis
- Reformer** | Extraverted Sensing with Introverted Intuition | Determination, monitoring performance, discipline



Poll: Which of these characters is most like your supervisor?



Princess Leia



Gandalf

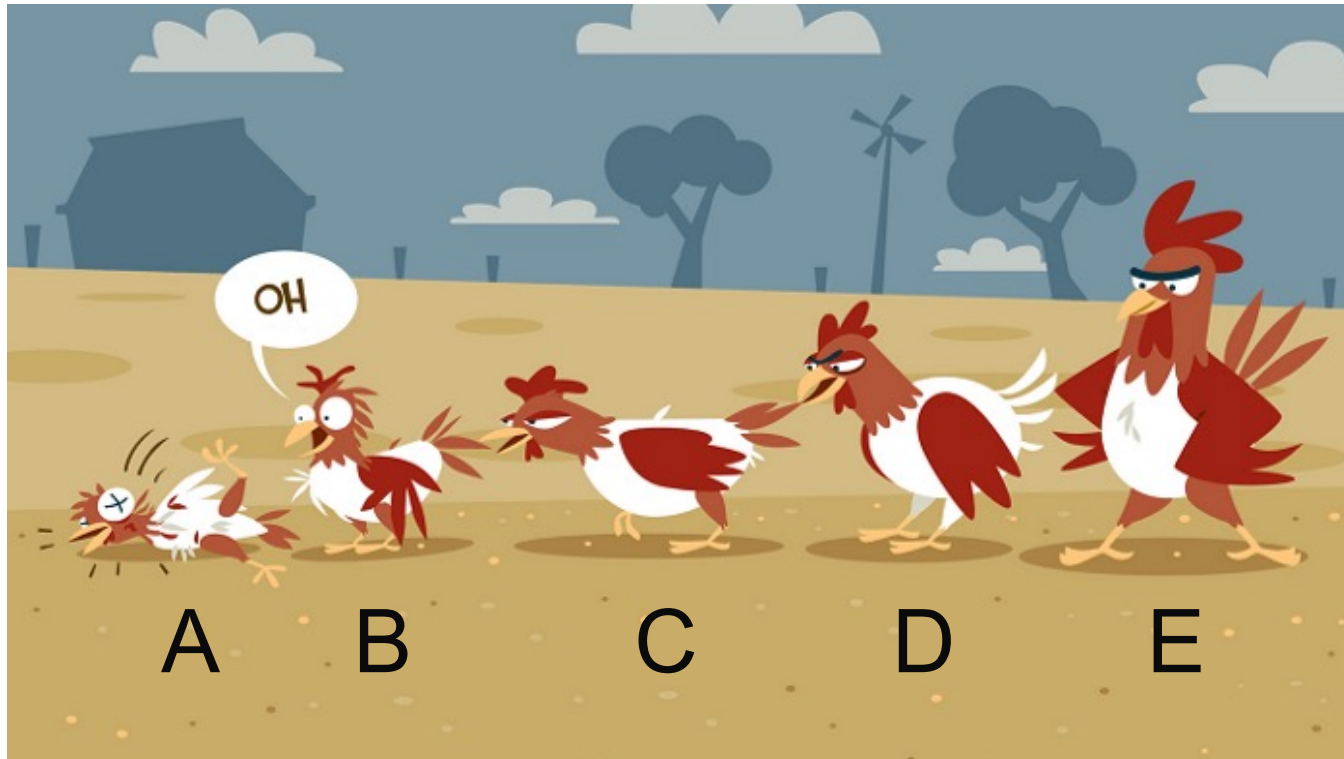


Enola Holmes

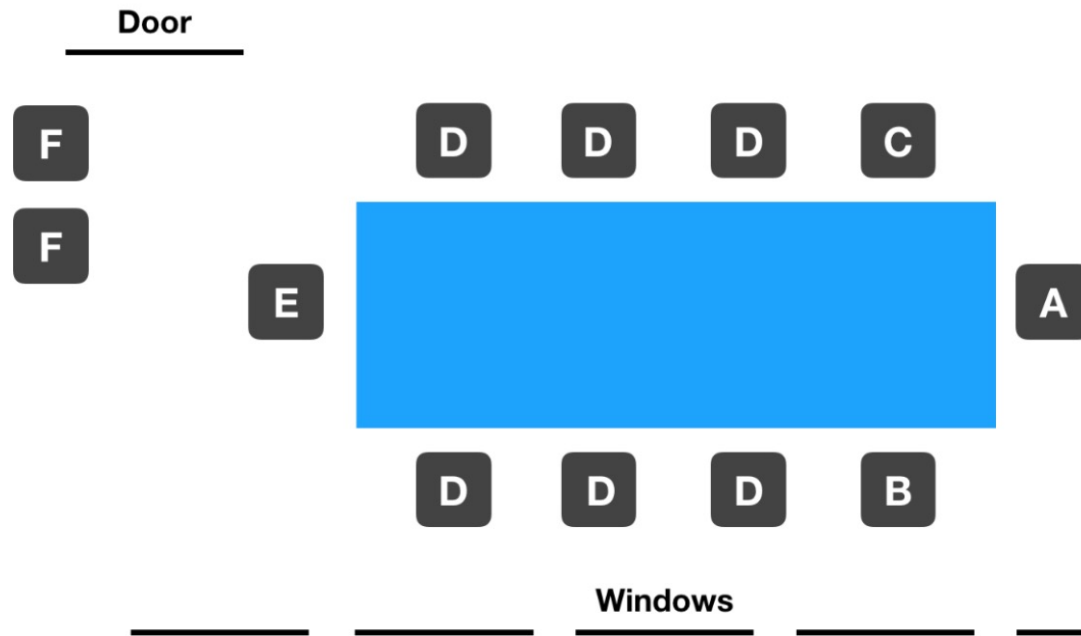


Darth Vader

Poll: Where are you in the pecking order at work?

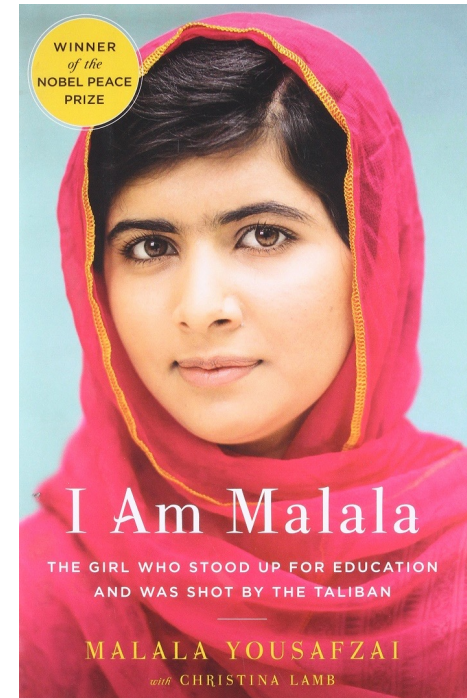


Who's in charge?



SCIENCE OF PEOPLE

The Changing Face of Power



The Other Side of Being in Charge

Are you...

helping?



hurting?

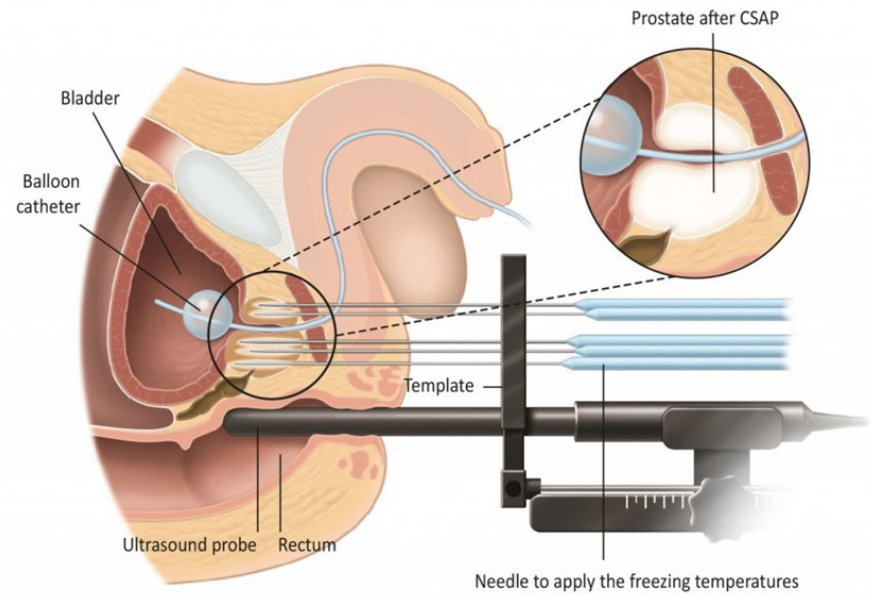
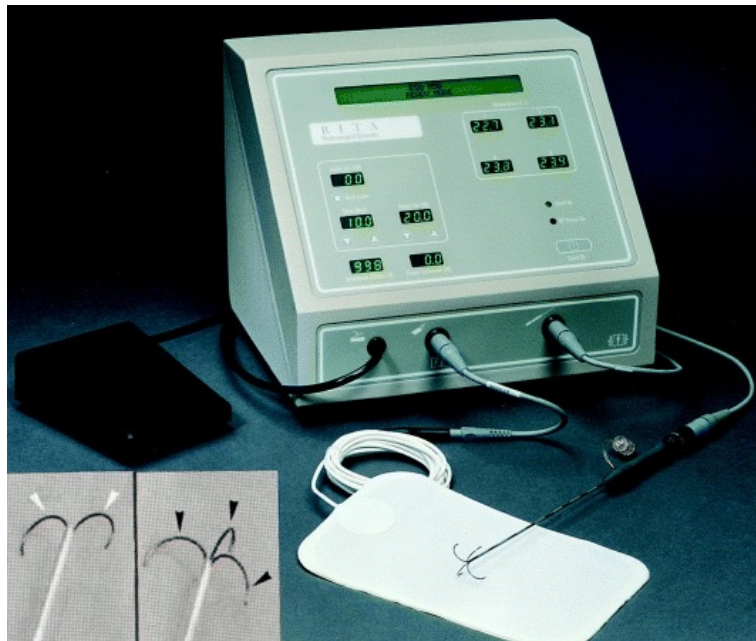


Questions?

Goal

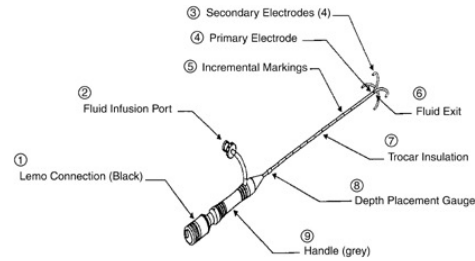
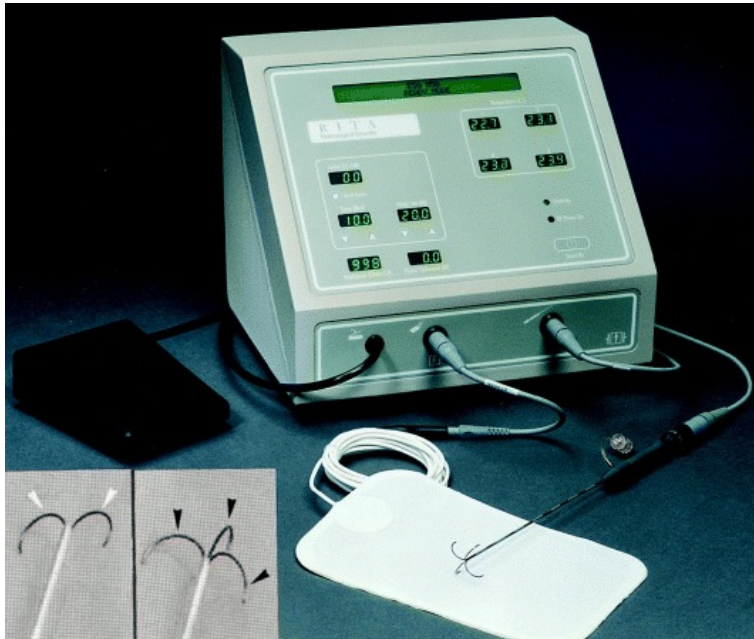
My goal is to help you develop more comfort with communicating difficult truths.

Multi-Center Prostate Cancer Ablation Study

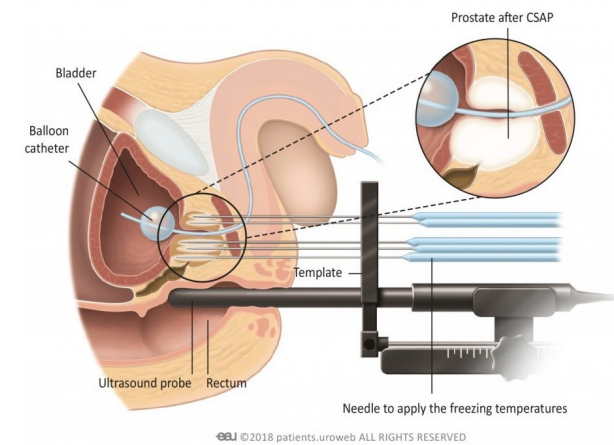


© 2018 patients.uroweb ALL RIGHTS RESERVED

Risk Considerations and Training



What is your role?

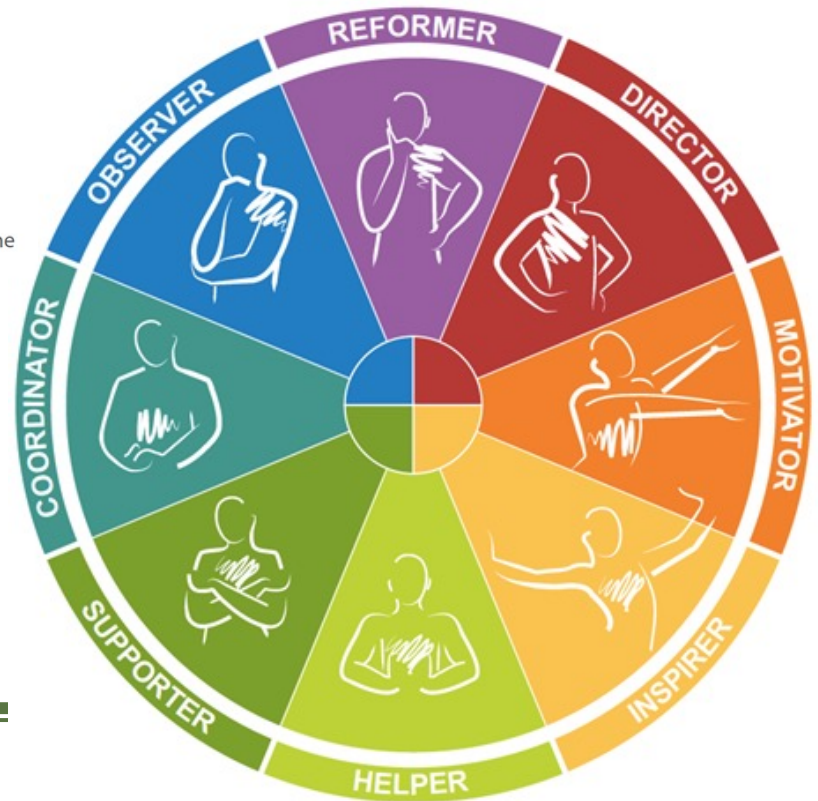


“Teddy, am I doing this right?”

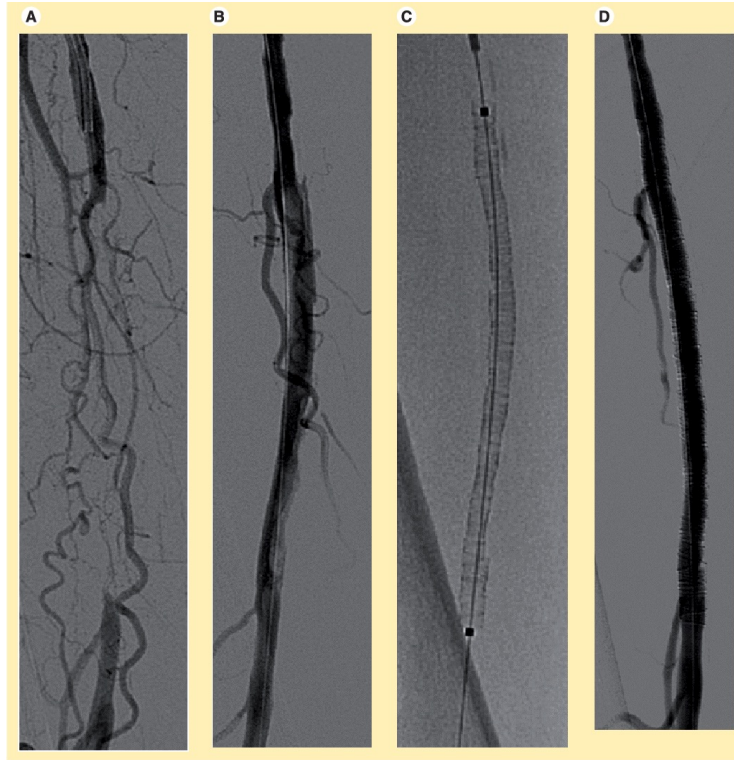
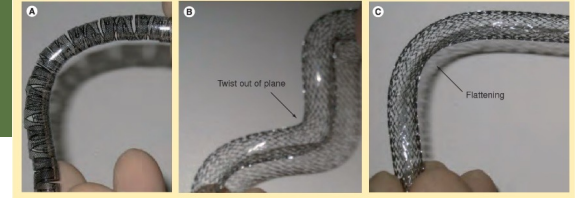
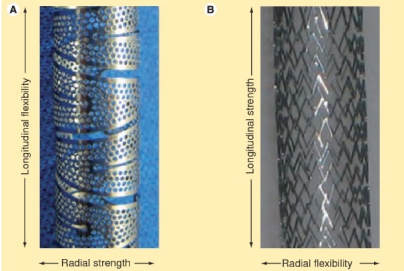
Poll: How would others categorize you?

The order and strength of the four colour energies in each participant generates eight types:

- Director** | Extraverted Thinking | Results focus, decisive, assertive
- Motivator** | Extraverted Intuition | Drive, enthusiasm, positive thinking
- Inspirer** | Extraverted Feeling | Persuasive, creative, people skills
- Helper** | Introverted Intuition with Extraverted Sensing | Flexible and helps others, shared ideas
- Supporter** | Introverted Feeling | Listens, loyal, team approach
- Coordinator** | Introverted Sensing | Planning, organising, time management
- Observer** | Introverted Thinking | Sets standards, Product knowledge, analysis
- Reformer** | Extraverted Sensing with Introverted Intuition | Determination, monitoring performance, discipline



Samba SFA Stent



Jet-Lagged and Far from Home



Who are the people in your neighborhood?



Building Relationships by Hanging Out and Getting to Know the Team





Questions?



Preparing for Trouble

Build affirmations and rewards into site training



Show them how you can help with their problems



Once upon a time, a group of rats were living happily under a tree in a forest. On a sunny hot day, a group of elephants, in search of water walked through the area where the rats were living. As the elephants walked, they destroyed the homes of those rats and even killed some of them. The rats ran to the king of the rats for help.

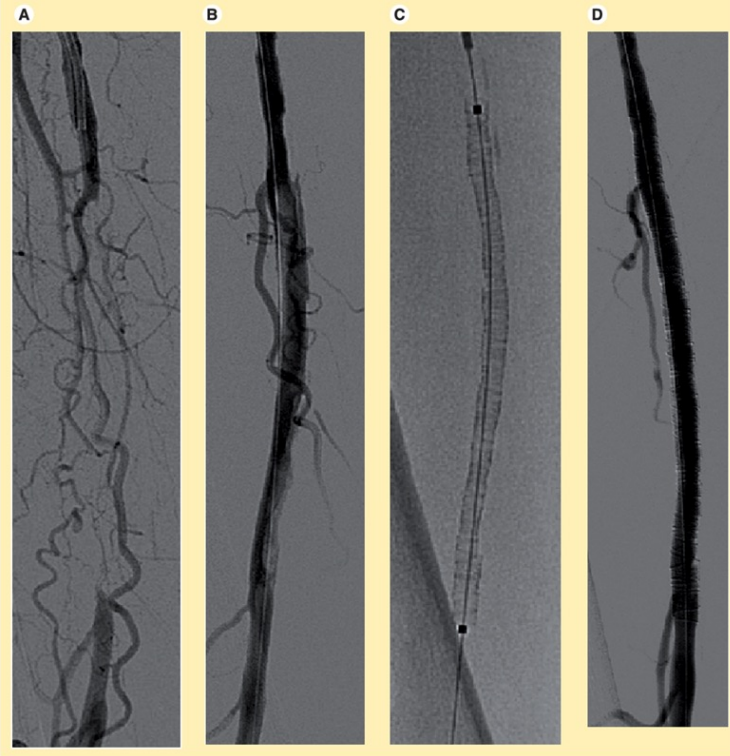
The king of the rats went to the chief of those elephants and requested that they take an alternative route to the pond. The chief of the elephants accepted the request of the rats and asked the other elephants to go the other way, without disturbing the rats.

The king of the rats was very happy and pleased by the gesture of the chief of the elephants. He thanked the elephants and promised that in return the rats would surely help the elephants when needed in the future. Hearing what the rat said, the elephants laughed thinking how could a small rat help big elephants.

After a few months, on another pleasant day, when the rats were playing they heard a loud shouts of elephants coming from the direction of the pond. The king of the rats realized that the elephants were in danger. He asked some of the strong rats in his group to come along, and they went in the direction of that sound.

Near the pond, they saw the elephants captured in traps set by some hunters. The rats quickly started biting the ropes, and soon the elephants were set free. The elephants thanked the rats and also apologized for making fun of them the other day.

Stop the Trial?



Smart, honest CEO cared about patients

Stent expected by leading physicians to be the best in class

Stent delivery system worked well for some doctors but not others

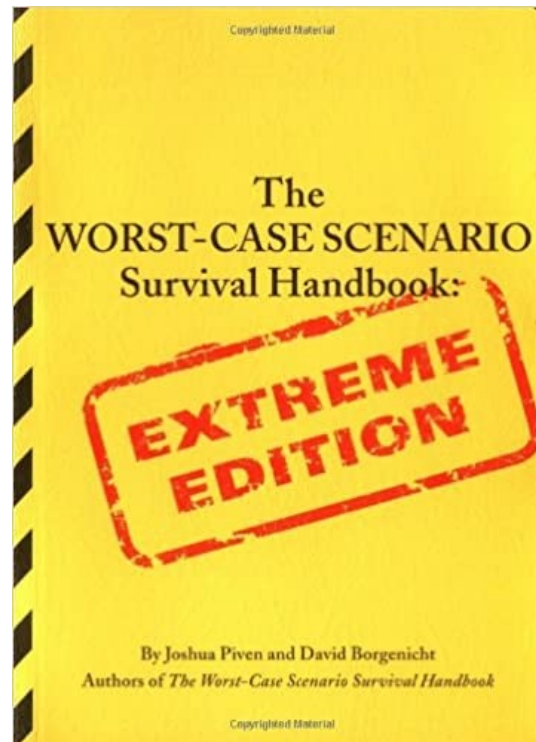
Pressure from investors to continue

Bad results could doom the company

The Trial Continued



How to Survive

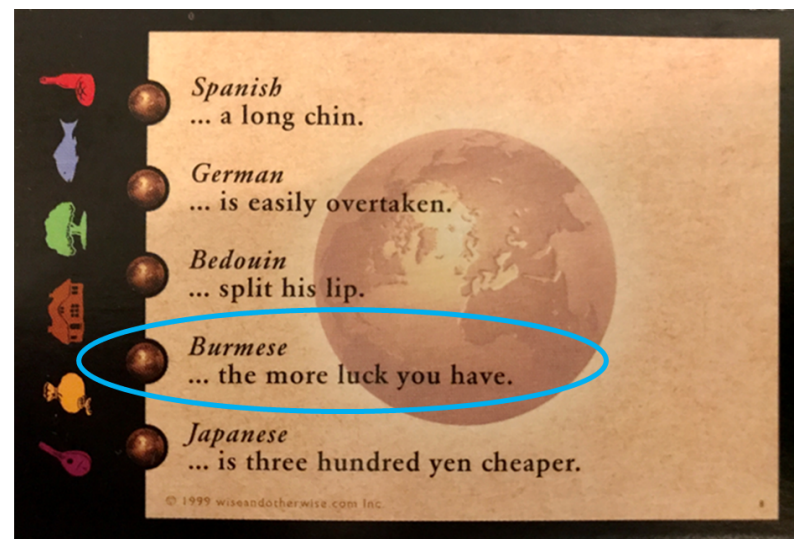
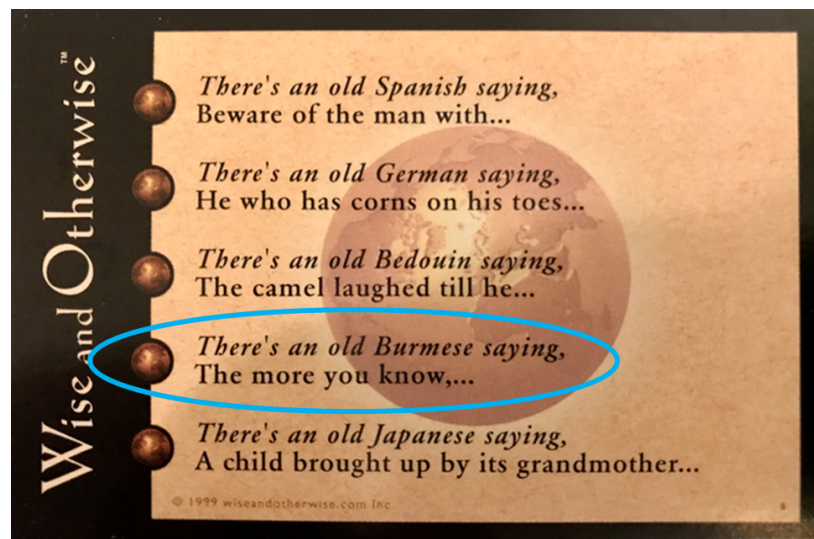


High Stakes Situations

He wanted me to
finish the procedure!



How do you create luck?



The more you know, the more luck you have.

Clinical Research Education Series 2021

Thank You

Open for Questions

Feedback Survey

A link to the feedback survey has been sent to the email address you used to register.

Please get out your device, find that email, and spend a few moments completing that survey before you leave today.

Tip: If on a mobile device, shift view to landscape view (sideways) for better user experience.