

Career Development Series 2023

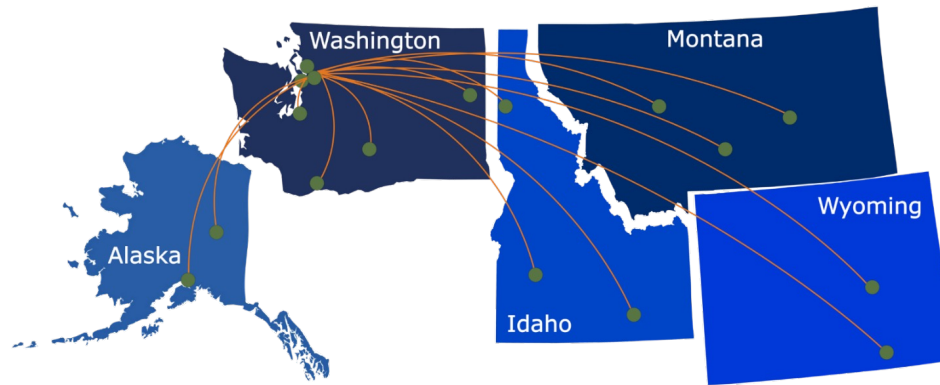
How We Discover, Nurture, and Sustain Successful Academic-Community Collaborations

Presentation will begin at 12:00 PM (PT)



ITHS

Institute of Translational Health Sciences
ACCELERATING RESEARCH. IMPROVING HEALTH.



What We Offer:

- 1 Research Support Services:** Members gain access to the different research services, resources, and tools offered by ITHS, including the ITHS Research Navigator.
- 2 Community Engagement:** Members can connect with regional and community based practice networks
- 3 Education & Training:** Members can access a variety of workforce development and mentoring programs and apply for formal training programs.
- 4 Funding:** Members can apply for local and national pilot grants and other funding opportunities. ITHS also offers letters of support for grant submissions.

Contact ITHS

Director of Research Development



- Project Consultation
- Strategic Direction
- Resources and Networking

Melissa D. Vaught, Ph.D.
ithsnv@uw.edu
206.616.3875

Scientific Success Committee

- Clinical Trials Consulting
- Guidance on Study Design, Approach and Implementation
- Feedback on Design and Feasibility

[https://www.iths.org/investigators/
services/clinical-trials-consulting/](https://www.iths.org/investigators/services/clinical-trials-consulting/)

Sept. 19 -- Clinical, Regulatory, and Business Considerations in Telemedicine and Device-Related Digital Health: Session 3

Oct. 4 -- How to Prepare for your Biostats Consult: Tips, Tricks and What to Expect with Anna Faino; Greta Linse; and Susanne May



Institute of **Translational** Health Sciences
ACCELERATING RESEARCH. IMPROVING HEALTH.

Feedback

At the end of the seminar, a link to the feedback survey will be sent to the email address you used to register.

How We Discover, Nurture, and Sustain Successful Academic-Community Collaborations

Co-Presented By:

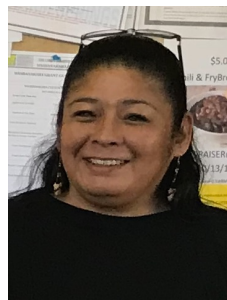
Emily Tomayko

Assistant Professor
Montana State University



Rosanna Sanders

Nutrition Education Program Assistant
Oregon State University Extension



Learning Objectives

At the end of the session, participants will be able to:

- 1** Define successful community collaborations.
- 2** Identify a characteristic of a successful community collaboration.
- 3** Discuss strategies to sustain collaborative relationships with communities.

Overview



Some
introductions
and sharing



Understanding
key terms



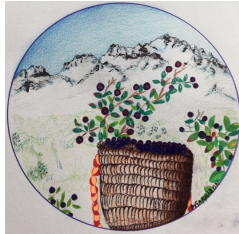
Discovering



Nurturing



Sustaining



Group
discussion





Center for American Indian
and Rural Health Equity



Community Engagement Core







TIME

- Give yourself time
- Read about community based participatory research and other community engaged principles
- No replacement for presence



Benefits of Institutional Support



Consultations



Technical Assistance



Trainings



Webinars



Resources



Funding

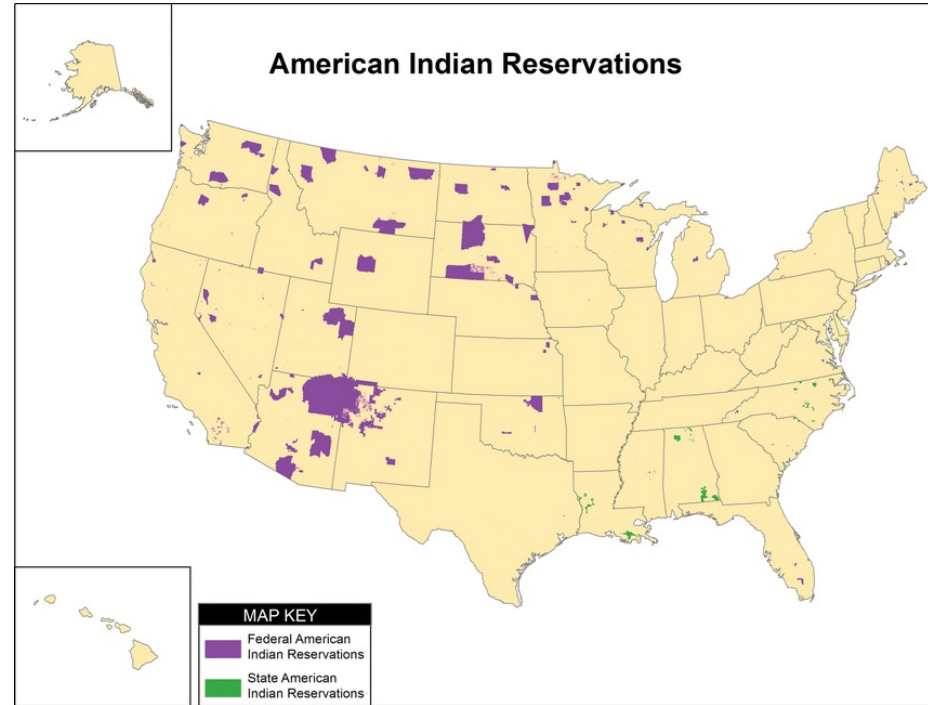


Other Support

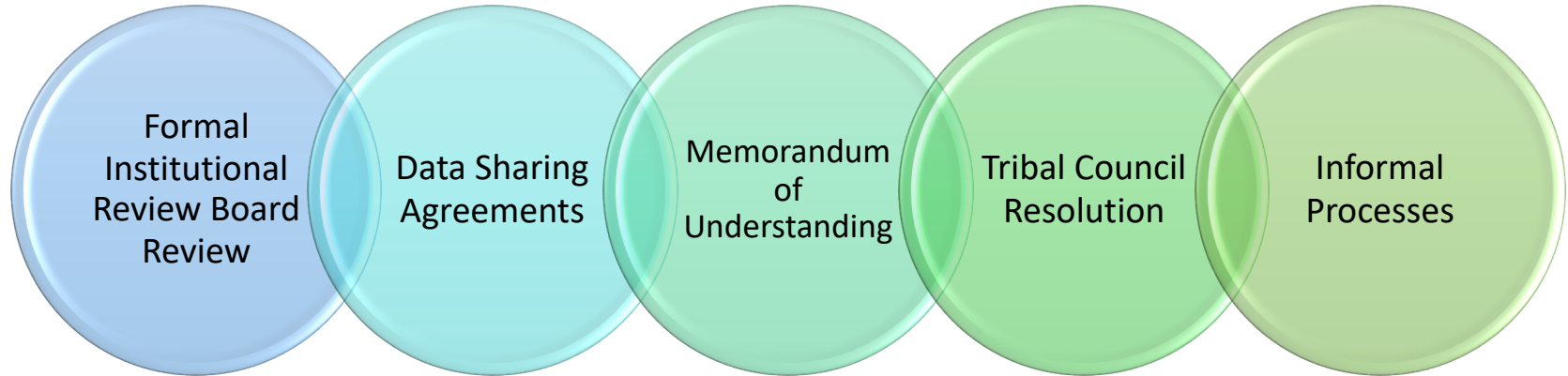
Engagement with Tribal Nations

- Sovereign nations
- Governance
- History
- Research Interest, Experience, & Management

- **Where to start?**



Examples of Research Processes



Development of a Toolkit to Facilitate Reconnection with Traditional Foods





HOME VIDEOS RECIPES ACTIVITIES ABOUT

INDIGENOUS
GRANDMOTHER
WISDOM
FOR
STRONG
FAMILIES

Turtle Island Tales family wellness program

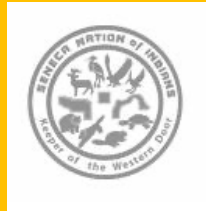
ITHS

Institute of Translational Health Sciences
ACCELERATING RESEARCH. IMPROVING HEALTH.

Healthy Children, Strong Families 1



Healthy Children, Strong Families 2



Turtle Island Tales



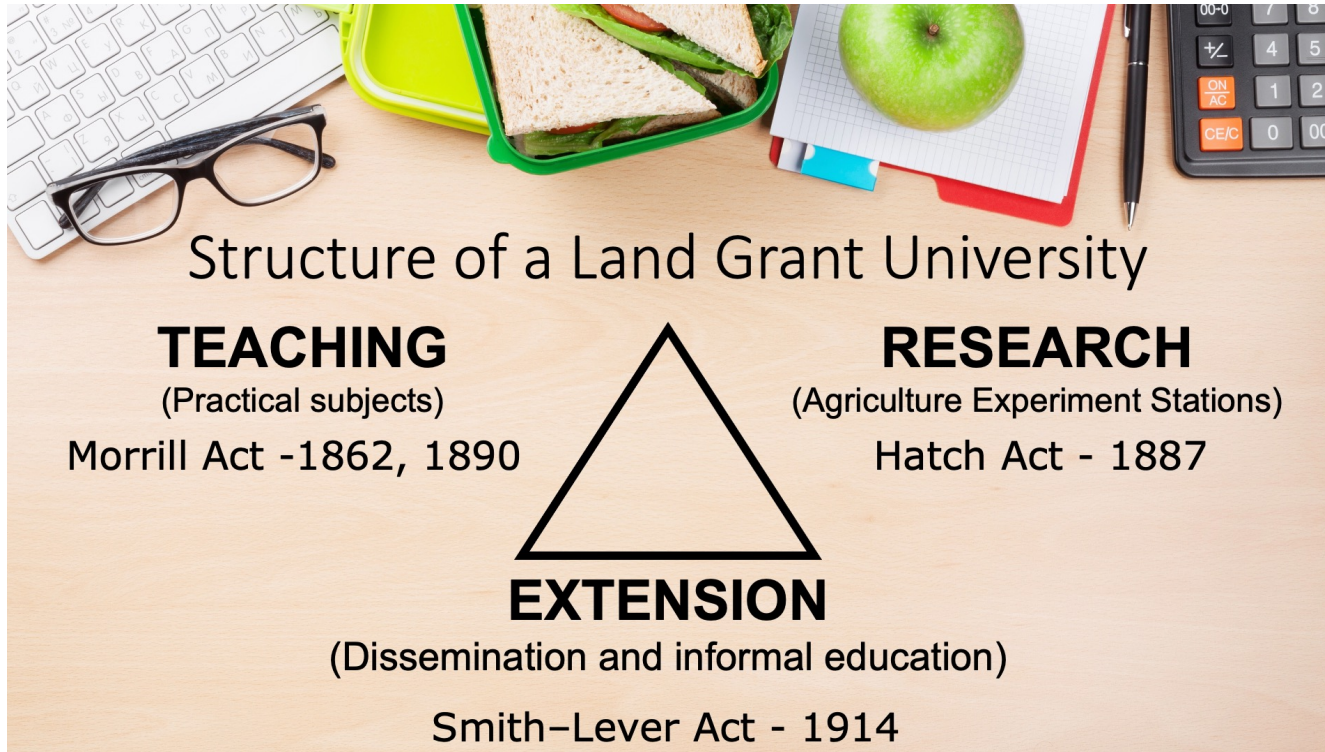
EXAMPLE: Traditional Foods Project



FORMATION OF THE TEAM



Consider Cooperative Extension



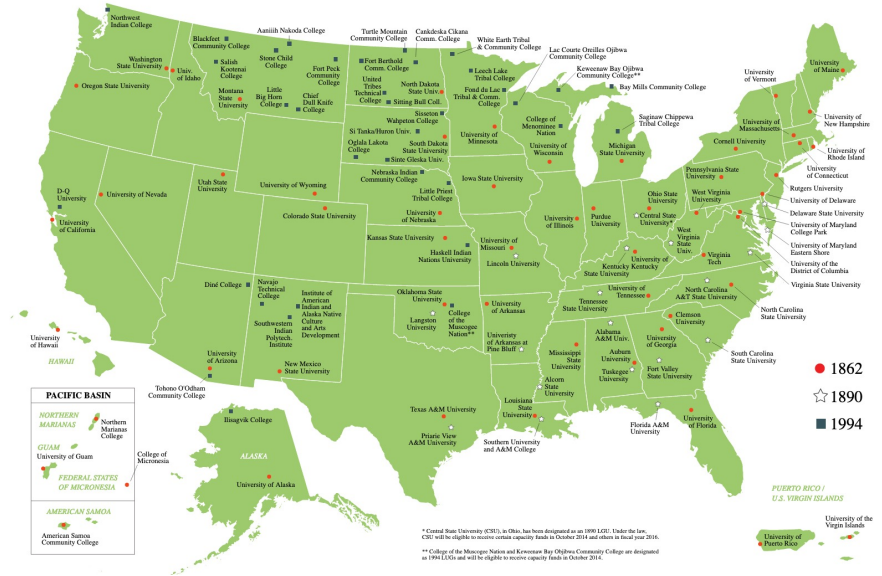
Extension Exists To...

- Conduct research of concern to state population
- Translate research into practice
- Disseminate practices in communities
- Promote economic, social, health, and environmental well-being



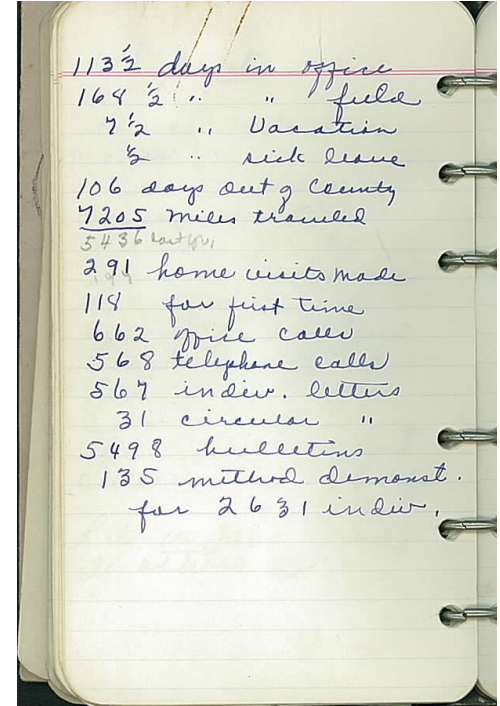
United States Department of Agriculture National Institute of Food and Agriculture

NIFA LAND-GRANT COLLEGES AND UNIVERSITIES



Philosophy of Extension

- Emphasizes
 - Equality of people
 - Possibility for change and/or progress
 - Reliability on science
 - Power of education
- *“Helping people help themselves”* and *“learn by doing”* are slogans that are still used



Types of Partners

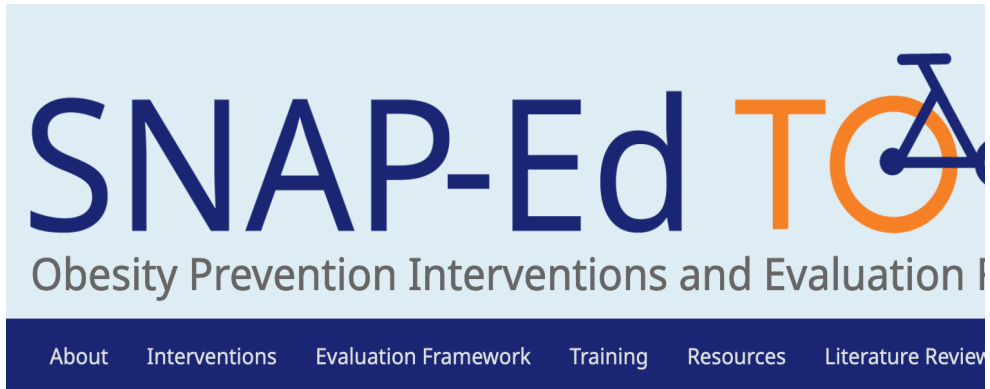
Campus-Based Extension Faculty

- Subject area specialist
- Trainers/teammates of county faculty
- Resource liaison between university and county faculty
- Develop programming
- Consultant/Advisor
- Research and evaluation

County-Based Extension Faculty

- Assess community needs
 - Prepare annual plan of work
 - Prepare specific program offerings
 - Conduct programs
 - Respond to client requests
 - Recruit and train volunteers
 - Evaluate programs
-
-

How has Extension supported successful partnerships in my work?



SNAP-Ed TO
Obesity Prevention Interventions and Evaluation Framework

About Interventions Evaluation Framework Training Resources Literature Review

**TURTLE ISLAND
TALES FAMILY
WELLNESS PROGRAM**

WAS SELECTED FOR
INCLUSION IN THE
SNAP-ED TOOLKIT IN
FY 22!



Welcome to the SNAP-Ed Toolkit website

This toolkit will help SNAP-Ed Implementing Agencies across the country find evidence-based interventions and evaluation frameworks in order to strengthen our impact on our goal to help SNAP-Ed participants make healthy physical activity choices on a limited budget.

**VISIT
SNAPEDTOOLKIT.ORG
TO LEARN MORE.**

Creativity with Funding



Many grants can have restrictions on travel, food



Look for more flexibility

Internal funds

Foundation awards

Project/partnership development grants

A long-exposure photograph of a night sky showing star trails in shades of blue and white. The trails are concentric circles centered on a point in the sky. In the foreground, the silhouette of a telescope dome is visible on the left, and a small building is on the right. The ground is dark and textured.

WHO DEFINES SUCCESS?

Nurturing Community Partnerships

- Navigating competing pressures
 - Diverse research portfolio
 - Secondary data analysis
 - Reviews and white papers
 - Other collaborative projects
 - Flexibility to change and push-back
 - Prioritizing relationship
-
-

Thank You!

Open for Questions

ITHS

Institute of **Translational** Health Sciences
ACCELERATING RESEARCH. IMPROVING HEALTH.

Feedback Survey

A link to the feedback survey has been sent to the email address you used to register.

Please get out your device, find that email, and spend a few moments completing that survey before you leave today.

Tip: If on a mobile device, shift view to landscape view (sideways) for better user experience.