



ITHS

Institute of Translational Health Sciences  
ACCELERATING RESEARCH. IMPROVING HEALTH.

**NED 2020**

Networking to Enhance Development

A Conference By and For Research Coordinators

[iths.org/ned2020](https://iths.org/ned2020)



**NED 2020**

**Networking to Enhance Development**

**ITHS**

Institute of Translational Health Sciences  
ACCELERATING RESEARCH. IMPROVING HEALTH.

# Walk the Path: Tips & Tricks on International Research Work Opportunities

**Aimee Schantz**

Research Coordinator

UW Department of Pediatrics

---

# Walk the Path: Tips & Tricks

## Today's Goals

- 1 Share my personal path of becoming a research coordinator
- 2 Hopefully inspiring you to follow your heart
- 3 Sharing some tips & tricks if you decide to go work abroad

# My Journey to International Work

## How did I get to do this?



**Public health education in Peru**



**Global oncology in Uganda**

# My Dream: International Work / Using Spanish Skills



The path to this type of work was completely unclear



Institute of Translational Health Sciences  
ACCELERATING RESEARCH. IMPROVING HEALTH.

# In the meantime...

Refocusing = Pausing = Exploring

Florida

Tennessee

Masters Degree

# IN THE BEGINNING: a long long time ago...



Landed my first job in research!



**Laboratory Manager**  
Department of Pathology  
Vanderbilt University



Institute of Translational Health Sciences  
ACCELERATING RESEARCH. IMPROVING HEALTH.



# Personal Discovery: Joy = Jobs in the science field

**Bench science**

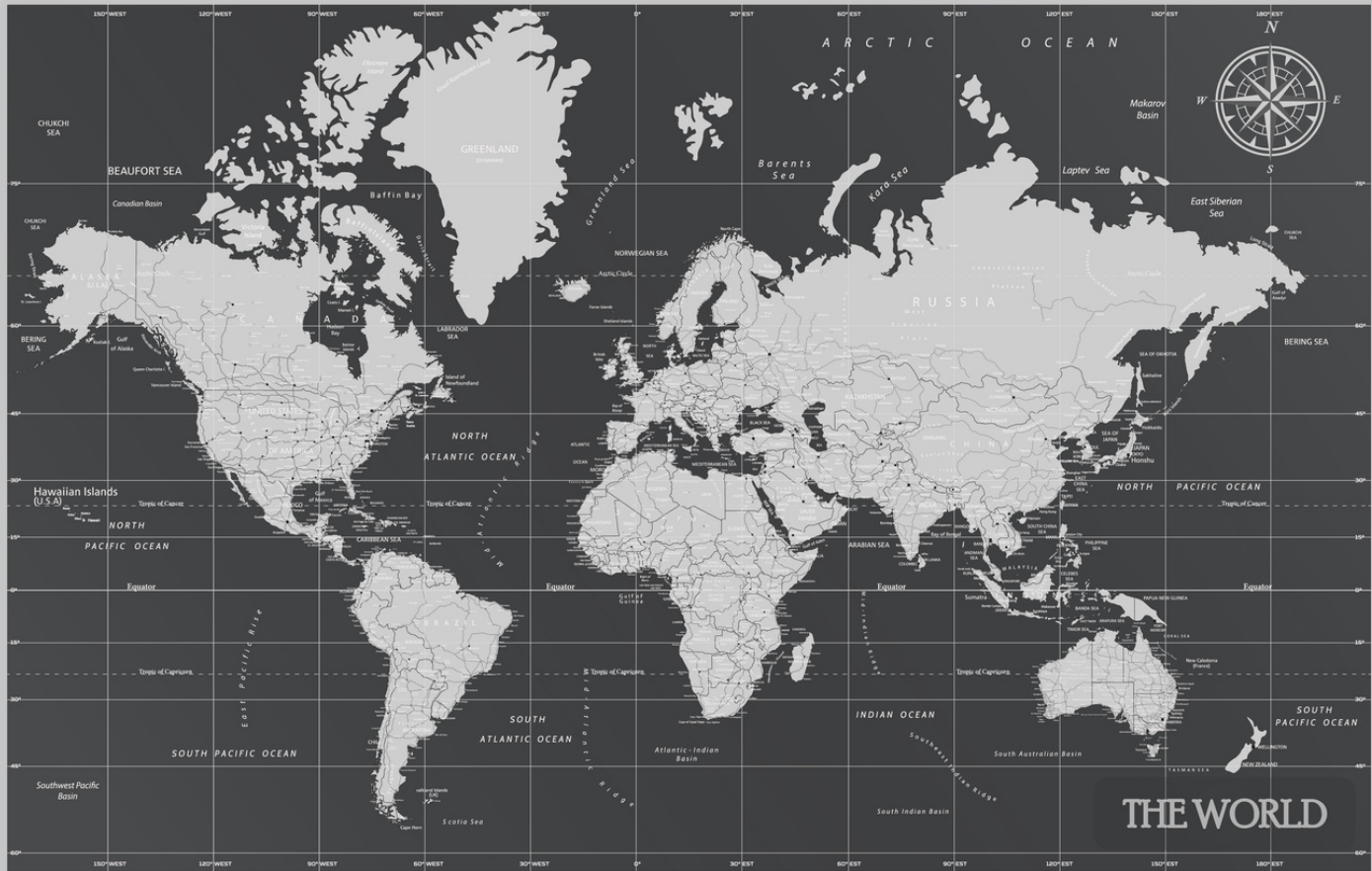
**Smart & quirky colleagues**

**Harborview Medical Ctr & Seattle VA**

**Working with my greater community**

**Sense of inquiry & knowledge**

# My Dream: International Work, Spanish??



The path to this type of work was *still* completely unclear

# In the meantime...

## Refocusing = Pausing = Exploring Global Health

**UW Courses**

**Cultural Studies**

**Global Health Courses**

**Leadership Workshops**

# Setting the Groundwork for International Work

## Seattle Course Catalog

▷ [Seattle Courses](#) ▷ [Bothell Courses](#) ▷ [Tacoma Courses](#) ▷ [Glossary](#)

### University of Washington Seattle Courses

The UW course descriptions are updated regularly during the academic year. All announcements in the General Catalog and Course Catalog are subject to change without notice and do not constitute an agreement between the University of Washington and the student. Students should assume the responsibility of consulting the appropriate academic unit or adviser for more current or specific information.

For an explanation of the symbols and abbreviations used in the course descriptions, select the [Glossary](#) link on this page or any of the course description pages.

The [Bothell Course Descriptions](#) and [Tacoma Course Descriptions](#) are also available online.

**Search UW Seattle Courses**

---

### College of Arts and Sciences

- African Studies -- See [Jackson School of International Studies](#)
- American Ethnic Studies
  - [Afro-American Studies \(AFRAM\)](#)
  - [American Ethnic Studies \(AES\)](#)
  - [Asian-American Studies \(AAS\)](#)
  - [Chicano Studies \(CHSTU\)](#)
  - [Swahili \(SWA\)](#)
  - [Tagalog \(TAGLG\)](#)
- [American Indian Studies \(AIS\)](#)
- Anthropology
  - [Anthropology \(ANTH\)](#)
  - [Archaeology \(ARCHY\)](#)
  - [Biological Anthropology \(BIO A\)](#)
- Applied Mathematics
  - [Applied Mathematics \(AMATH\)](#)

### COLLEGES, SCHOOLS AND PROGRAMS

---

- [Arts & Sciences](#)
- [Built Environments](#)
- [Business](#)
- [Dentistry](#)
- [Education](#)
- [Engineering](#)
- [Environment](#)
- [The Information School](#)
- [Interdisciplinary Graduate](#)
- [Interschool and Intercollege](#)
- [Law](#)
- [Medicine](#)
- [Nursing](#)
- [Pharmacy](#)
- [Public Policy & Governance](#)
- [Public Health](#)
- [ROTC](#)
- [Social Work](#)
- [Undergrad Interdisciplinary](#)

### CONTACT

---

General Catalog Office  
[gencat@uw.edu](mailto:gencat@uw.edu)

# Setting the Groundwork for Global Health Work

## INTERSCHOOL OR INTERCOLLEGE PROGRAMS GLOBAL HEALTH

Detailed course offerings (Time Schedule) are available for

- [Winter Quarter 2020](#)

### **G H 101 Introduction to Global Health: Disparities, Determinants, Policies, and Outcomes (5) I&S** *Todd Faubion, Stephen Gloyd*

Provides an introduction to global health, including: the burden and distribution of disease and mortality; the determinants of global health disparities; the making of global health policies; and the outcomes of global health interventions. Offered: jointly with GEOG 180/ISIS B 180; Sp.

[View course details in MyPlan: G H 101](#)

### **G H 201 Multidisciplinary Perspectives in Global Health (1) I&S, DIV** *Daren Wade*

Presenters from a multidisciplinary group of professionals introduce key topics, challenges, and opportunities in the field of global health. Speakers provide a broad-based overview of disparities, determinants, policies, and outcomes in global health, as influenced by factors such as communication, culture, and global power structures, among others. Credit/no-credit only. Offered: A.

[View course details in MyPlan: G H 201](#)

### **G H 210 Confronting Global Diseases: Introductory Biologic Principles and Context (3) NW** *Joshua Herbeck*

Provides a broad introduction to the leading causes of disability and death globally. Covers the basic biologic and scientific principles of globally prevalent human health problems, including the connections between the biology of disease and current prevention and treatment interventions used in public health. Not intended for biological science majors. Offered: Sp.

[View course details in MyPlan: G H 210](#)

### **G H 220 Global Environmental Change and Public Health (3) I&S** *Kristie L Ebi*

Humans are the primary drivers of global environmental changes that are changing the planet on the scale of geological forces. Students will be introduced to these changes and their consequences for human health and well-being, with a focus on climate change and its consequences. Offered: jointly with ENV H 220.

[View course details in MyPlan: G H 220](#)

### **G H 305 Global Health and Justice (3) I&S** *Beth E. Rivin*

Explores health as a human right, focusing on injustices and inequities that occur around the world that result in disease, disability and death. Using a justice framework, considers social determinants of health and vulnerabilities of marginalized groups. Students learn about SDGs, human rights law, bioethics and the pivotal role that law and ethics play in addressing injustices in health. Prerequisite: G H 101/GEOG 180/ISIS B 180.

# Setting the Groundwork for Global Health Work

## Winter Quarter 2020 Time Schedule

### GLOBAL HEALTH (INTERSCHOOL OR INTERCOLLEGE PROGRAMS )

Enrollment and status (open/closed) were accurate when this page was created (12:03 am January 7, 2020) but may have changed since then. For current enrollment and status, check the [Enrollment Summary](#). (UW NetID required.)

[Help with the UW Time Schedule](#)

Enrl Restr	SLN	Sect ID	Cred	Meeting Times	Bldg/Rm	Instructor	Status	Enrl/Lim	Grades	Crs Fee	Other
?	?	?		?	?	?	?	?	?	?	?

#### G H 101 INTRO TO GLOBAL HLTH

(I&S)

14993	A	5		to be arranged GROUP-START ONLINE COURSE: STUDENTS BEGIN/END COURSE TOGETHER. COURSE IS FULLY ONLINE, THERE ARE NO DESIGNATED MEETING TIMES FOR THIS COURSE - PLEASE DISREGARD 'TO BE ARRANGED' NOTATION IN THE TIME SCHE DULE. NO OVERLOADS, ADD CODES, OR LATE ADDS WITHOUT INSTRUCTOR PERMISSION.  TO ACCESS COURSE VISIT HTTP://CANVAS.UW.EDU		Faubion, Todd	Open	151/ 140			WDE
14994	AA	QZ		to be arranged			Closed	19/ 20			DJ
14995	AB	QZ		to be arranged			Closed	24/ 20			DJ
14996	AC	QZ		to be arranged			Closed	17/ 20			DJ
14997	AD	QZ		to be arranged			Closed	20/ 20			DJ
14998	AE	QZ		to be arranged			Open	23/ 20			DJ
14999	AF	QZ		to be arranged			Open	24/ 20			DJ
21857	AG	QZ		to be arranged	* *		Closed	24/ 20			DEJ

# I Found The List Server!

## GHRC\_JOBS

---

GHRC\_jobs -- Global Health: Jobs and Internship postings

### About GHRC\_jobs

English (USA)

To keep up with the information we receive here at the UW GHRC related to global health-related employment in local and global organizations and universities, we have interesting internships announcements: GHRC\_jobs. Please send text descriptions and refrain from sending attachments. Members can choose to receive those announcements. Please avoid multiple postings of the same announcement, where possible.

To see the collection of prior postings to the list, visit the [GHRC\\_jobs Archives](#). *(The current archive is only available to the list members.)*

### Using GHRC\_jobs

To post a message to all the list members, send email to [ghrc\\_jobs@u.washington.edu](mailto:ghrc_jobs@u.washington.edu).

You can subscribe to the list, or change your existing subscription, in the sections below.

### Subscribing to GHRC\_jobs

Subscribe to GHRC\_jobs by filling out the following form. You will be sent email requesting confirmation, to prevent others from gratuitously subscribing you. This is a list administrator.

### UW community:

If you have a computer account at the University of Washington, and you intend to subscribe to this list, change something about the subscription you already have, or access private list archives, please log in first.

[Log in](#)

Once you have logged in, this page will automatically fill in your email address.

Your email address:

For persons on

If you do not have a  
be assigned to you.

# Exploring International Work

**[GHRC\_jobs] Service and Health Among Deployed Veterans (SHADE) Study at Seattle VA**

Amy Hagopian <hagopian@uw.edu>  
Global Health Jobs <ghrc\_jobs@u.washington.edu>; cophp\_jobs@uw.edu

SeattleERIC\_CSP595-ProjectM...  
126 KB

**Project Manager for Multi-Site Study (CSP #595)**

The Seattle Epidemiologic Research and Information Center (ERIC), Department of Veterans Affairs (VA) is recruiting a full-time Project Manager for the CSP #595: Service and Health Among Deployed Veterans (SHADE) Study. The Seattle ERIC is based at the VA Puget Sound Health Care System and is an epidemiologic research center in the national Cooperative Studies Program (CSP) of the VA Office of Research and Development (ORD) (<https://www.research.va.gov/programs/csp/>).

Under the supervision of the Program Manager at the CSP #595 Coordinating Center, the Project Manager will oversee major aspects of the management of the CSP #595 Study as delegated by the Program Manager. Primary and shared responsibilities will include:

**Subject: [GHRC\_jobs] Job opportunity: Program Operations Specialist in CFAR Administration Core**

Susan P Mello <spmello@uw.edu>  
to cfarmembers@uw.edu, ghrc\_jobs@uw.edu, Evans School Career Services, Students of Color for Public Hei

Tue, Jul 2, 2019, 2:31 PM

You are viewing an attached message. Gmail can't verify the authenticity of attached messages.



The UW/Fred Hutch Center for AIDS Research (CFAR) has an outstanding opportunity for a **full-time (100% FTE) Program Operations Specialist**.


The UW/Fred Hutch Center for AIDS Research (CFAR) is one of several Centers for AIDS Research funded by the National Institutes of Health in the U.S. The UW/Fred Hutch CFAR has consistently rated in the top 3 in the U.S. for HIV/AIDS research and employs some of the most eminent researchers and educators in the field. The ultimate goal of the CFAR is to facilitate HIV/AIDS research to bring us closer to a cure for the disease. We accomplish this by supporting HIV/AIDS research at our four consortium institutions (UW, Fred Hutch, Seattle Children's, Infectious Disease Research Institute), and our local, regional, and international affiliates in locations such as Kenya, Peru, Mozambique, Uganda, and South Africa. A very important part of our mission is to support HIV research career development of early career investigators. Come join our team and make your own contribution toward ending the global HIV epidemic!

Begin forwarded message:


From: AUB Global Health Institute <gh@aub.edu.lb>  
Subject: [PHAW] Job Vacancy | Program Coordinator  
Date: January 13, 2020 at 10:53:55 PM PST  
To: Undisclosed recipients;  
Reply-To: AUB Global Health Institute <gh@aub.edu.lb>

Dear All,

The Global Health Institute is now recruiting a "Program Coordinator" for the Refugee Health Program. If you are interested to join our team click here.



Global Health Institute



**Subject: [GHRC\_jobs] (no subject)**

Jenny Lenahan <jenny.lenahan@gmail.com>  
to ghrc\_jobs

Wed, Oct 24, 2018, 4:46 AM

You are viewing an attached message. Gmail can't verify the authenticity of attached messages.

Hi everyone,

Save the Children's Seattle team is currently recruiting a Senior Research Manager. The job posting is linked below. Thanks!

<https://recruiting.ultipro.com/SAV1002STCF/JobBoard/7d92e82b-af74-464d-859b-c5b8cba6e92e/OpportunityDetail?opportunityId=becb9a3b-d139-40a4-881c-ee13bab78b39>



Landed my first job in Global Health ABROAD!



**Community Coordinator**  
**Sacred Valley Health**  
Peru



Institute of Translational Health Sciences  
ACCELERATING RESEARCH. IMPROVING HEALTH.

# Global Health Work in Peru: A Lifetime Experience



# Global Health Work in Peru: A Lifetime Experience



**ITHS**

Institute of Translational Health Sciences  
ACCELERATING RESEARCH. IMPROVING HEALTH.

# Global Health Work in Peru: A Lifetime Experience



# Global Health Work in Peru: A Lifetime Experience



# Global Health Work in Peru: A Lifetime Experience



# My Dream Became Real: International Work/Spanish

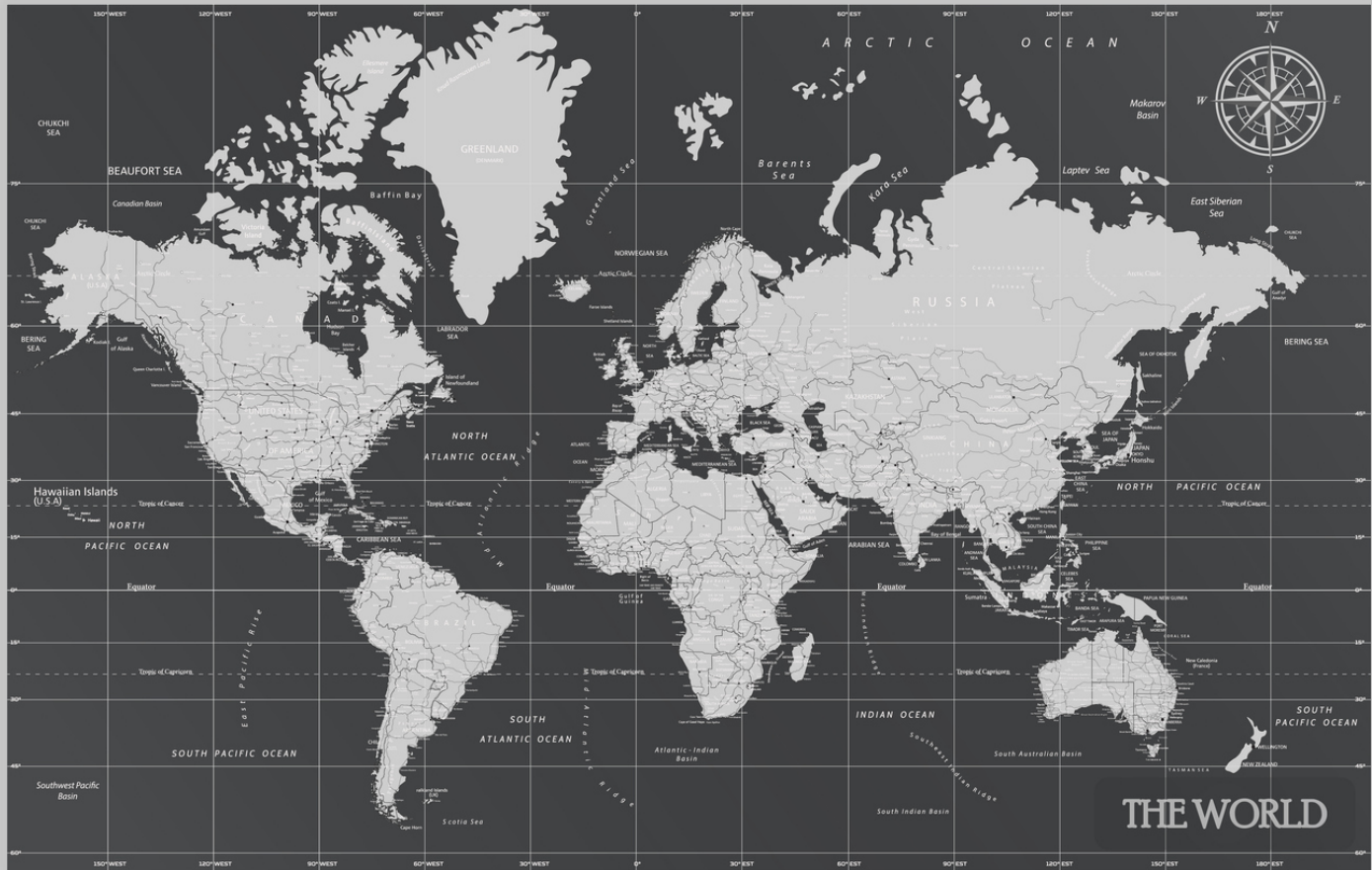


The path was clear: Global Health!



Institute of Translational Health Sciences  
ACCELERATING RESEARCH. IMPROVING HEALTH.

# Please I want to do this again! Sign me up.





# In the meantime...

## Refocusing = Pausing = Exploring



Florida - 6 months



Back to Seattle | UTemp Staffing

# Exploring International Global Health Work – Again!

Home / Interactive World Map

## INTERACTIVE WORLD MAP

Discover our impact all over the world.

Numbers displayed on the map are a representation of the activity in each country. Once you use the filter selections below, you will have the opportunity to explore projects and faculty in each country.

Projects + Faculty = Activity Number 

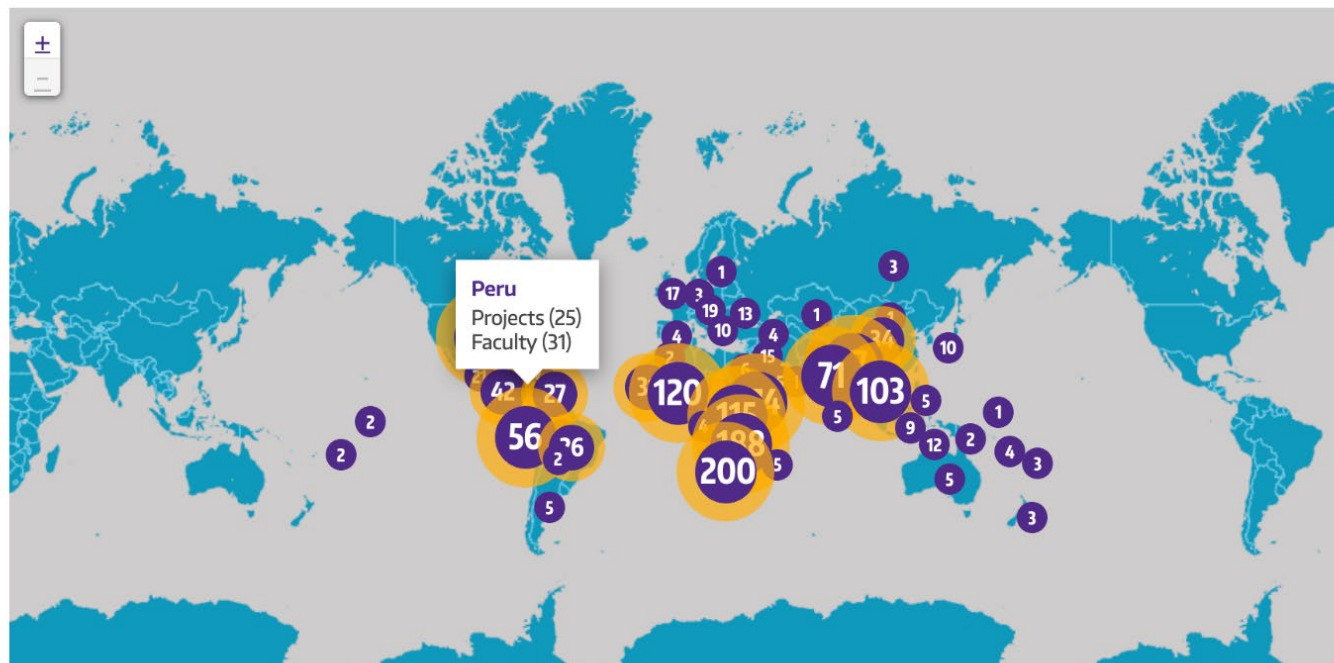
### OVERVIEW

PROJECTS  
**693**

COUNTRIES  
**144**

FACULTY  
**437**

HEALTH TOPICS  
**144**



Filter from the selections below

#### Countries

Select a Country

#### Centers, Programs, Institutes

Select Centers, Programs, Institutes

#### Focus Areas

View All Focus Areas

#### Health Topic

Select a Health Topic

#### Faculty

Select Faculty


SEARCH

# Exploring International Global Health Work – Again!

## INTERACTIVE WORLD MAP

Discover our impact all over the world.

Numbers displayed on the map are a representation of the activity in each country. Once you use the filter selections below, you will have the opportunity to explore projects and faculty in each country.

Projects + Faculty = Activity Number 

### OVERVIEW

PROJECTS	COUNTRIES	FACULTY	HEALTH TOPICS
<b>693</b>	<b>144</b>	<b>437</b>	<b>144</b>



Colombia  
Projects (9)  
Faculty (9)

18

Leaflet | Map data © Mapbox

FILTERS: COLOMBIA   
9 Projects found

Filter from the selections below

**Countries**  
Colombia  

**Centers, Programs, Institutes**  
Select Centers, Programs, Institutes 

**Focus Areas**  
View All Focus Areas 

**Health Topic**  
Select a Health Topic 

**Faculty**  
Select Faculty 

SEARCH

[Clear All Filters](#)

## COLOMBIA

### PROJECTS

- [citiesRISE](#)
- [Counselling on breastfeeding](#)
- [Evaluation of Regional Malaria Elimination Initiative \(RMEI\)](#)
- [Health Status and Health Care of Venezuelan Migrants and Refugees in Colombia](#)
- [Improving Access to Healthcare in indigenous communities in Vaupés, Colombia](#)
- [Intercultural delivery in indigenous communities of Amazonas, Colombia](#)
- [NCD and Tobacco Control Investment Cases](#)
- [Territorialization of food guidelines and food composition table update](#)
- [Therapeutic Impact of Pre-operative CESM in Colombian Women with Newly Diagnosed Breast Cancer](#)

### FACULTY

- [Randall Chesnut »](#)
- [Pamela Collins »](#)
- [Lorenzo Giacani »](#)
- [Julie Gralow »](#)
- [Bernardo Hernandez Prado »](#)
- [Peter Houck »](#)
- [Wendy Johnson »](#)
- [Pablo Montoya »](#)
- [John Scheel »](#)

### ORGANIZATIONS

- [RTI International »](#)
- [Save the Children »](#)

# Exploring International Global Health Work – Again!

**A year had passed by ...**

Landed my **SECOND** job in Global Health **ABROAD!**



**Research Operations Manager**  
**Fred Hutch Global Oncology**  
Uganda



Institute of **Translational** Health Sciences  
ACCELERATING RESEARCH. IMPROVING HEALTH.

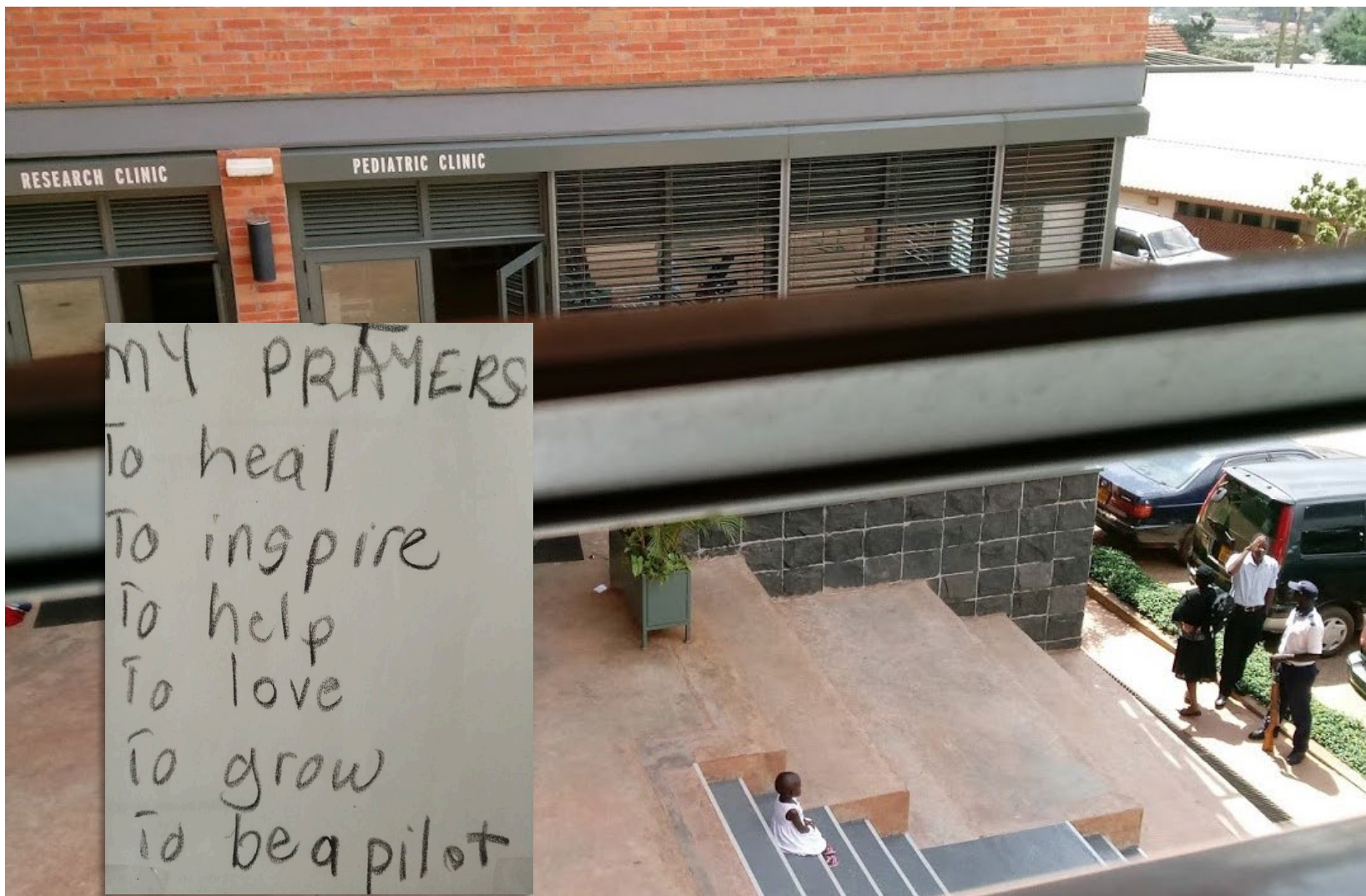
# Research Work in Uganda: A Lifetime Experience



# Global Health Work in Uganda: A Lifetime Experience



# Global Health Work in Uganda: A Lifetime Experience

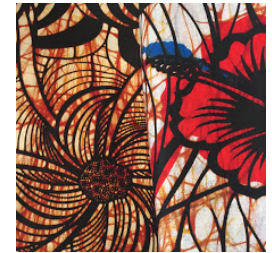
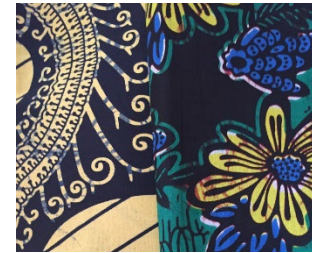




# Research Work in Uganda: A Lifetime Experience



# Research Work in Uganda: A Lifetime Experience



# Lessons Learned

**It's never too late to pursue your dream job.  
I turned 50 while in Uganda.**

# Lessons Learned

**You will be tempted to lend money to help out people you care about.**

---

**Seek advice from others with experience working in lower/middle income countries.**

**What is your plan and/or boundaries around lending money.**

# Lessons Learned

**Sometimes you just can't do things like the locals.**



**I bought a car like a local, and it got stolen within a month!**

**I loved this car!**

# Useful Links to find International Global Health Work

## UW Seattle Campus Course Catalog

<http://www.washington.edu/students/crscat/>

## UW Dept. of Global Health Course Catalog

<http://www.washington.edu/students/crscat/gh.html>

## Global Health Courses Winter Quarter 2020

<https://www.washington.edu/students/timeschd/WIN2020/gh.html>

## GHRC\_jobs

[http://mailman13.u.washington.edu/mailman/listinfo/ghrc\\_jobs](http://mailman13.u.washington.edu/mailman/listinfo/ghrc_jobs)

## Interactive World Map

<https://globalhealth.washington.edu/interactive-map>

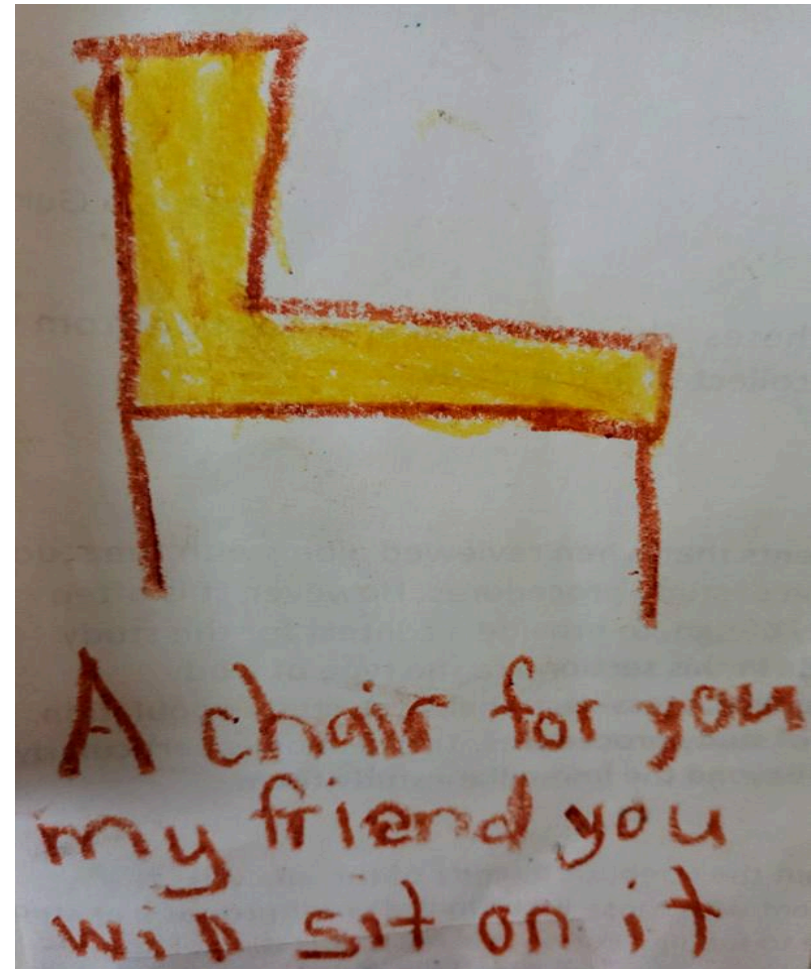
## Six Things You Can Do

<https://globalhealth.washington.edu/news/2019/09/25/six-things-you-can-do-get-involved-global-health>

# Experiences That Will Stay with Me Forever



# Experiences That Will Stay with Me Forever





# Thank you

- **Montine Lab, PI: Thomas J. Montine, MD, PhD, Stanford University**
  - **Sacred Valley Health**
  - **Dickey Lab, PI: Chad Dickey, PhD, University of South Florida**
  - **UTemp Staffing**
  - **Fred Hutch Global Oncology Program**
  - **Bamshad Lab, PI: Michael J. Bamshad, MD, University of Washington**
  
  - **Ingrid Brown, Senior Manager of Communications & Special Projects, ITHS...talk about needing a village**
-

# Questions?



**Aimee Schantz**  
Research Coordinator  
UW Department of Pediatrics  
[aschantz@uw.edu](mailto:aschantz@uw.edu)