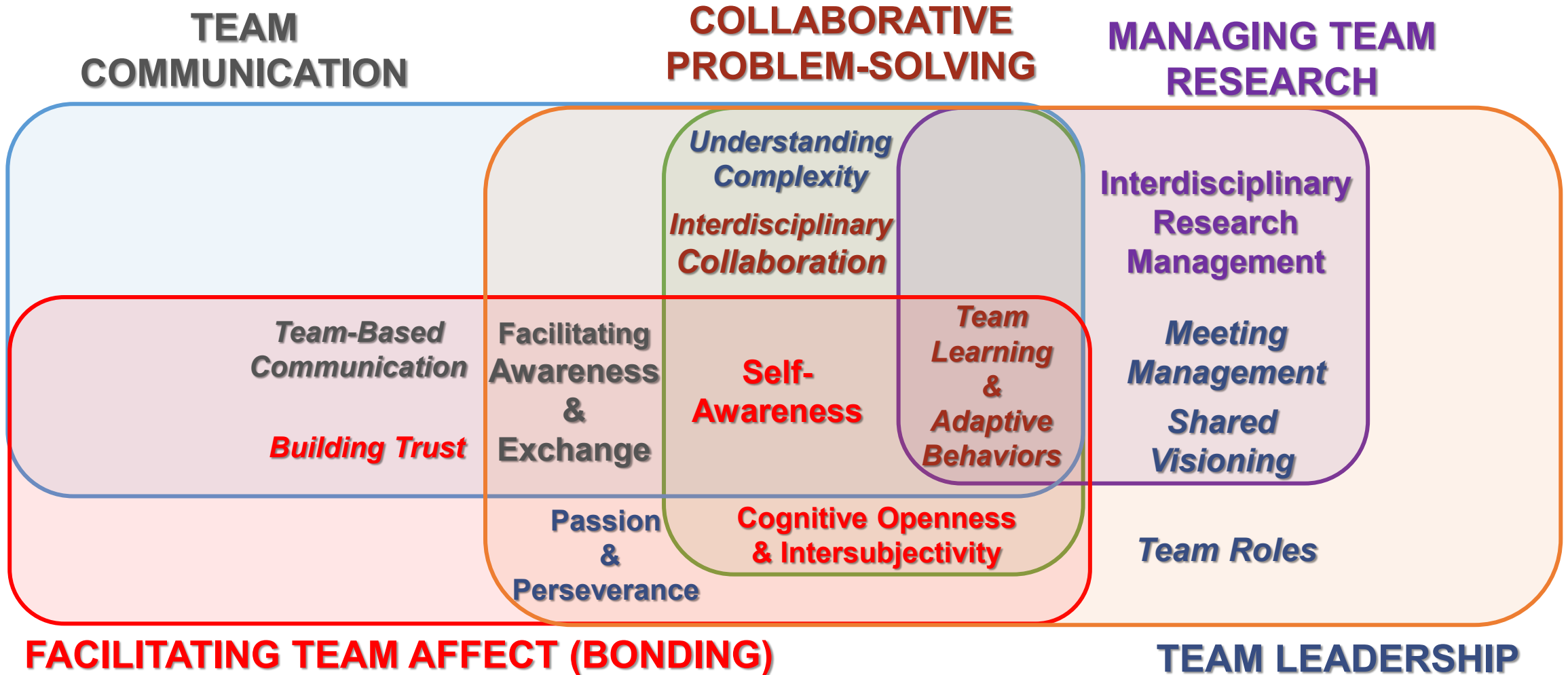


Welcome to the final Session of the 2022-2023 Team Science Seminar Series!

June 8, 2023

CTSA Translational Team Science Competencies for *Individuals* & Teams



TRANSLATIONAL TEAM COMPETENCY DOMAINS
Individual Competencies Team Competencies

Lotrecchiano et al, 2020 Individual and Team Competencies in Translational Research Teams. *Journal of Clinical and Translational Science*.



Engaging Communities in Interdisciplinary Research

Maggie Ramirez, PhD

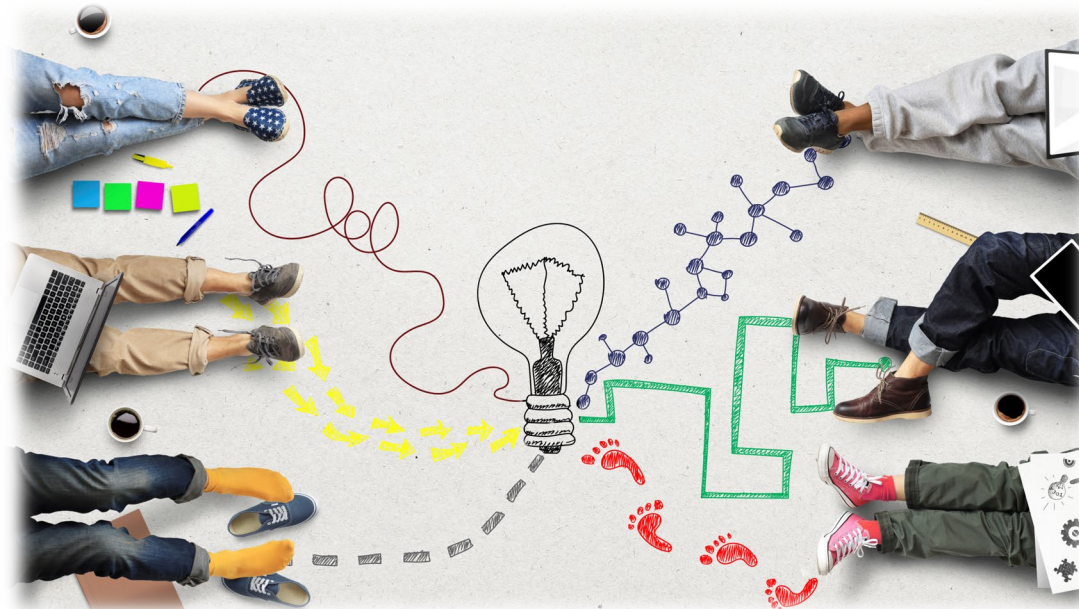
William L. Dowling Endowed Professor in Health Administration
Assistant Professor, Health Systems and Population Health
University of Washington School of Public Health

Acknowledgement: Slides adapted from Linda Ko and Laura-Mae Baldwin

Learning Objectives

At the end of this seminar, participants will be able to:

1. Define community engagement in the context of research.
2. Explain why community engagement is important in interdisciplinary and translational research.
3. Identify strategies for early career researchers to increase community engagement in their research.



Plan for the Day

- Welcome, plan for the day
- Mix of didactic and large group discussion
- Small group discussion via breakout rooms
- Q&A with session participants
- Wrap-Up

What is Community Engagement?

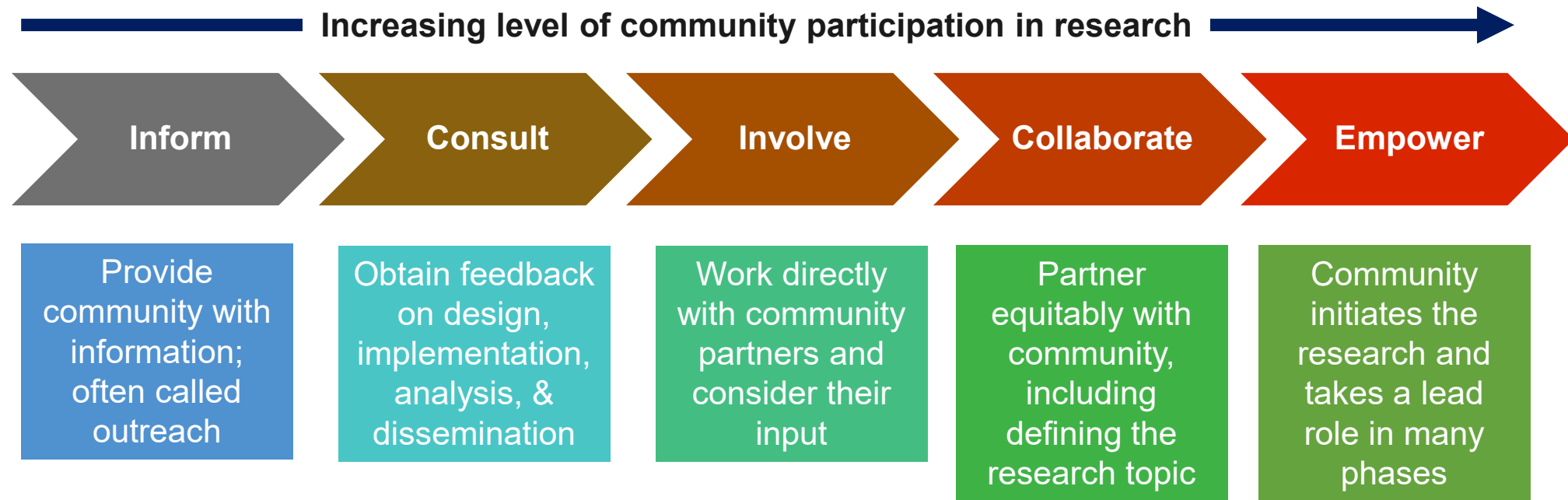
“...the process of working collaboratively with and through groups of people affiliated by geographic proximity, special interest, or similar situations to address issues affecting the well-being of those people. It is a powerful vehicle for bringing about environmental and behavioral changes that will improve the health of the community and its members. It often involves partnerships and coalitions that help mobilize resources and influence systems, change relationships among partners, and serve as catalysts for changing policies, programs, and practices.” (CDC, 1997)

Who is the “community”?

Any entity outside of an academic institution.

Partners can include organized groups, agencies, institutions, or individuals.

Spectrum of Engagement



Discussion Question #1

Think about a research project you are currently working on.

In the chat:

- Describe the research project in 1 sentence.
- Tell us who you would consider to be the “community” in the project (whether or not you are actually engaging them now)

What are the benefits of community engagement in clinical and translational research?

“Better science”

- Improve the research design, reach, efficacy, and effectiveness.
- Ensure researchers meet the needs of diverse research participants.
- Health disparities have been persistent across populations and setting.

What are the benefits of community engagement in clinical and translational research?

“Better Answers”

- Improve translation of evidence to practice (effective interventions often don't get translated into practice).
- Enhance relevant, effective, scalable interventions.
- Bring about health improvement and community activation.

What are the benefits of community engagement in clinical and translational research?

And...

Increase community trust in academic/scientific institutions and research receptivity.

Discussion Question #2

Benefits and Challenges to Engaging Community in Research

In the chat:

1. What are the benefits to investigators of engaging communities in research?
2. What are the benefits to communities of engaging in research?
3. What do you anticipate as some challenges to engaging a community in research?

Where to Begin

Define the community

Geographic proximity

Health condition

Race/ethnicity

Get to know the community

Spend time in community

Attend events

Identify potential partners

Previous collaborations

Referrals from trustworthy sources

Reputation in community

Characteristics of Effective Partners



Adapted from CCPH, Developing a CBPR partnership, Unit 2, <https://depts.washington.edu/ccph/cbpr/index.php>

Moving Forward

Approach potential partners

Know what community involvement is expected to accomplish

Discuss short- and long-term **benefits** and **costs**

Form a collaborative body, e.g., CAB, steering committee

Identify health issue/concern

Community-driven

Researcher-driven

Seek funding

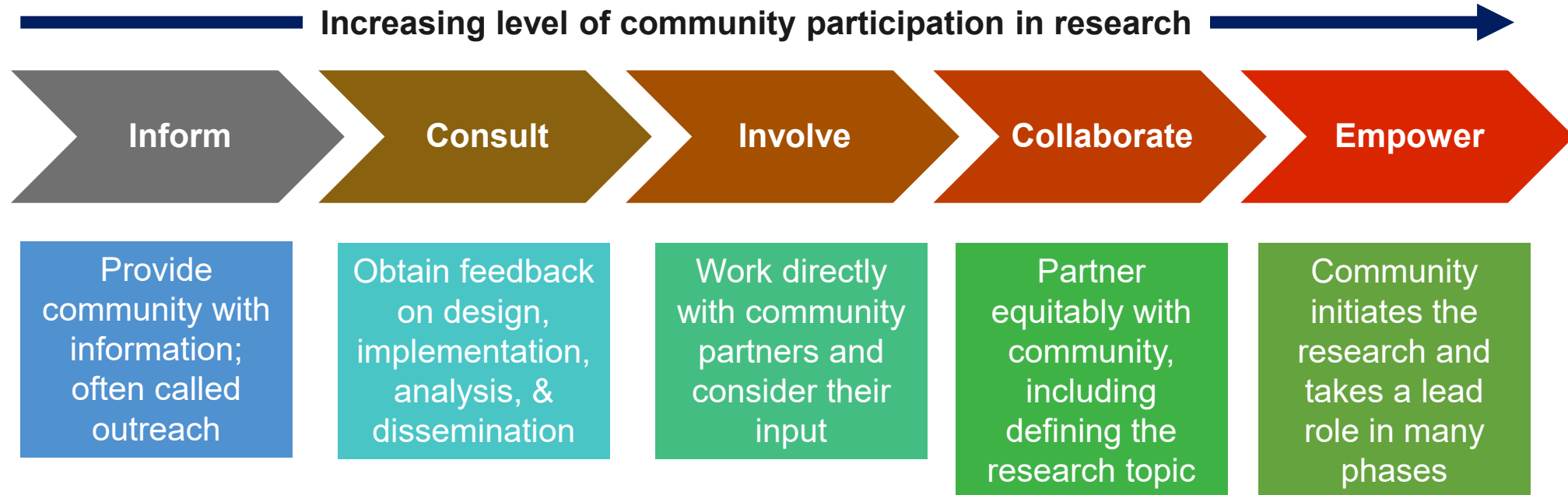
Engage partners

Determine roles/responsibilities; draft MOU

Include community partners in budget

Discussion Question #3

Think about a research project you are currently working on.
How can you begin to engage a community partner in the study?



Summary

In this seminar, you learned...

1. How community engagement is defined in the context of research.
2. Why community engagement is important in research.
3. Strategies to increase community engagement in your research.

Community Engagement Resources

- [Introduction to community engaged research](#)
- [Community engagement principles](#)
- [Community campus partnership for health](#)
- [Best Practice Resource for Investigators: Working with Clinical Settings](#)
- [Best Practice Resource for Communities](#)

Wrapping Up the 2023-2024 Team Science Seminar Series & Planning for 2023-2024!

- Offered 10 one-hour sessions from Oct 2022-June 2023 from 12pm-1pm on the 1st Thurs of each month
- Certificate offered through ITHS if attend 8 or more sessions (80%) & complete session evaluations by 9/30/23.
 - Reminder: Complete evaluations for webinars watched asynchronously
 - Email: brendaz@uw.edu & Laurel Barchet lah19@uw.edu to ask for links to evaluation
 - Certificates of completion for the 2022-2023 Webinars will be sent via email by June 30, 2023 and October 15, 2023 for those needing more time to complete webinars

The 2023-2024 Team Science Seminar Series will start Thurs October 5, 2023 at 12pm pacific time

Stay tuned for announcements of topics & speakers!

Inaugural 2022-2023 Team Science Seminar Series Dates & Topics

Date	Topic	Date	Topic
10/6/22	Introduction to the Team Science Seminar Series 2022-2023: Why is Team Science Important?	3/2/23	Handling Everyday Conflict with Curiosity, Courage, and Compassion
11/3/22	Building Self-Awareness and Leadership Traits for Team Effectiveness	4/6/23	Creating Engagement: Facilitation from Chaos to Construct
12/1/22	Setting the Foundation for Successful Meeting Management	4/20/23*	Multiple-PI Collaborative Grant Applications
1/5/23	Building an Interdisciplinary Research Team	5/6/23	Diversity, Equity, and Inclusion in Team-Based Research
2/2/23	Growth Mindset & Giving and Receiving Feedback	6/1/23	Engaging Communities in Interdisciplinary Research

Upcoming Workshop

Interdisciplinary Team Science & Community-Engaged Research

- ▶ Date: September 25, 2023
- ▶ Time: 9:00 AM to 1:30 PM
- ▶ Place: the Hans Rosling Center for Population Health, Room 155, UW
- ▶ Sponsored by: ITHS Team Science & The UW Population Health Initiative
 - ▶ Registration will go live soon
 - ▶ Topics:
 - ▶ Class A and Class C Legislation in support of appointment, promotion and tenure (APT) of interdisciplinary community engaged researchers
 - ▶ Review of an Interdisciplinary APT Toolkit
 - ▶ Update from UW Tri-campus Community Engaged Workgroup

Debrief/Wrap-Up

- ▶ Please provide feedback on today's session!
 - ▶ Feedback in chat
 - ▶ Complete Today's Session Evaluation
- ▶ We welcome your feedback on all aspects of the seminar series too—please feel free to reach out to anyone from our team to share your thoughts & requests!