

# Strategies to Identify and Engage Community Partners

**Maggie Ramirez, PhD, MS, MS**

William L. Dowling Endowed Professor in Health Administration  
Assistant Professor, Health Systems and Population Health  
University of Washington School of Public Health

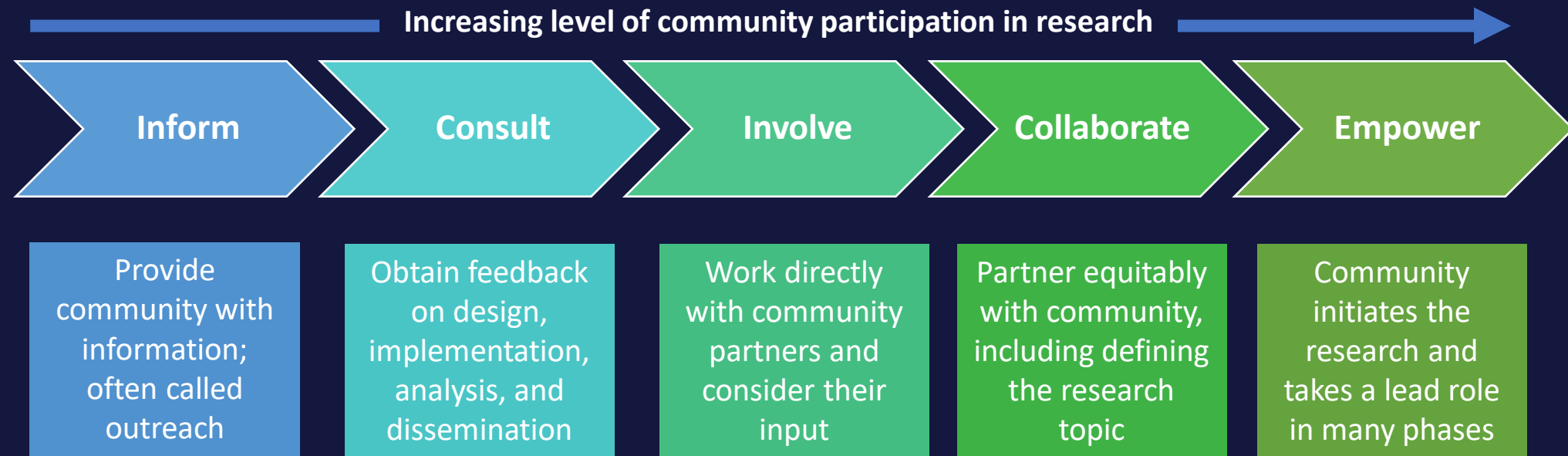


# What is community-engaged research?

“The process of working collaboratively with and through groups of people affiliated by geographic proximity, special interest, or similar situations to address issues affecting the well-being of those people.” (CDC)



# Spectrum of Community Engagement



Adapted from CDC, Principles of community engagement, 2<sup>nd</sup> ed. 2011

# Start Building Relationships Early



**ITHS**

Institute of Translational Health Sciences  
ACCELERATING RESEARCH. IMPROVING HEALTH.



# Understand the community you want to work with



# Identify potential community partners

- What interests me about this potential partner?
- What would be the mutual benefits of partnering?
- What is their capacity for research?





# Approach the community about a project idea

Ideal project addresses community's needs and aligns with investigator's research interests



# Collaborate on Proposal Development




**ITHS**

Institute of *Translational* Health Sciences  
ACCELERATING RESEARCH. IMPROVING HEALTH.



# Identify funding resources



W UNIVERSITY of WASHINGTON

**ITHS** Institute of Translational Health Sciences  
ACCELERATING RESEARCH. IMPROVING HEALTH.

ABOUT COMMUNITY INVESTIGATORS EDUCATION & TRAINING FUNDING NEWS & EVENTS

ITHS TRANSLATIONAL RESEARCH PARTNERSHIP AWARDS—ACADEMIC COMMUNITY PARTNERSHIPS

ITHS > Funding Opportunities > ITHS Translational Research Partnership Awards—Academic Community Partnerships

**ITHS Translational Research Partnership Awards – Academic Community Partnerships**

Funding Opportunities  
Early-Stage Product Development Award  
ITHS Translational Research Partnership



# Collaborate on proposal development

- Research question
- Research strategy
- Budget
- Compensate partners!



# Create a plan for the collaboration

- Roles & responsibilities
- Mediation plan
- Submission timeline
- Review process





# Engage community partners during project period

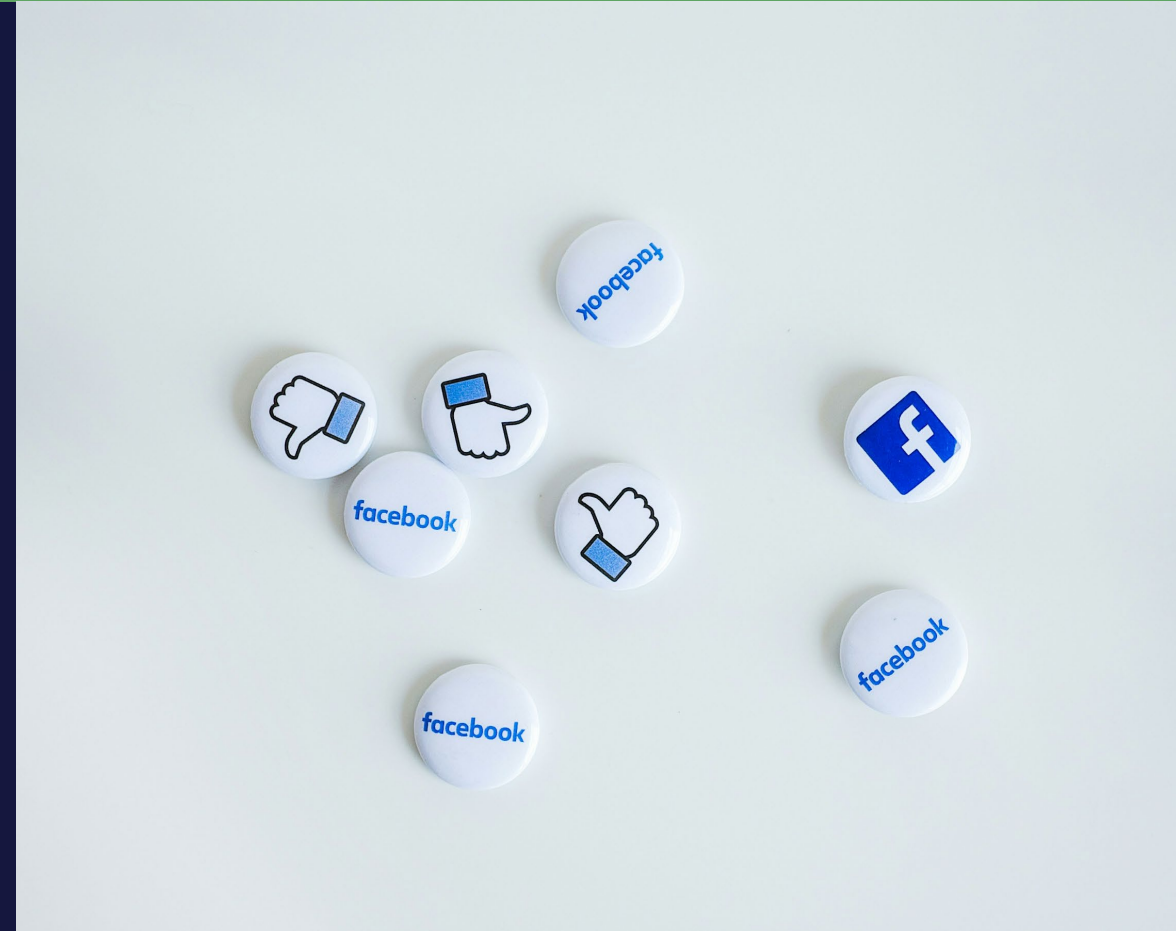


# Establish regular meeting times



# Share study findings with the community

- Inquire about preferences
- Consider creative methods
- Consider language preferences





# Create a plan for sustainability

Consider both the sustainability of the project and the partnership.



## Scenario

**Background:** Sara is an early-stage investigator interested in community-engaged research and its potential to address health disparities. She is eager to initiate a project in a neighborhood with high rates of chronic disease. Sara has identified a community health center as a potential partner due to its strong ties with the local population. The community health center serves as a hub for various health programs and Sara believes collaboration could lead to impactful outcomes. Sara has recently started spending time volunteering at the community health center and getting to know the key players.

**Challenge:** While Sara has a genuine interest in building a trusting relationship with the community health center, she is also on a tight timeline to secure funding. She has recently learned about a grant opportunity for community-engaged research projects, but the application deadline is approaching fast. Sara is confident the community health center would be willing to provide a letter of support for the application, but the organization would have minimal input in shaping the research project given the tight deadline. Sara is aware the community health center has a history of feeling exploited by researchers.

**Question:** Should Sara **apply** for the grant opportunity or **wait** until the next application cycle? Consider the tension between the need for authentic relationship building and the time-sensitive grant opportunity.

# ITHS Resources for Community Engagement

If you're interested in...	Contact...
<u>Community-based organizations</u>	Sonia Bishop (skbishop@uw.edu)
<u>Health systems</u>	Laurie Hassell (lhassell@uw.edu)
<u>Primary care practices</u>	Dillon van Rensburg (drensb@uw.edu)
<u>Research navigation support</u>	Melissa Vaught (vaughtmd@uw.edu)



Acknowledgement: Some of the content was adapted from the Southern California Clinical and Translational Science Institute, Community Engagement. *Toolkit for Developing Community Partnerships*.  
<https://sc-ctsi.org/resources/developing-community-partnerships-toolkit>

